

Help contribute to citizen science at our preserves!

Take multiple identifiable photos



- Photograph different angles and parts
- Zoom in and out on the subject



Use a background

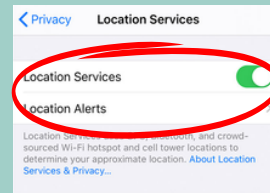
Try to not get other species in the photo

Don't lose photo metadata

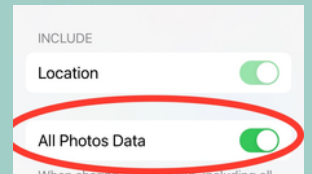
Do not upload screenshots



Turn on camera location settings



Link metadata when transferring photos



Wild
vs
Cultivated

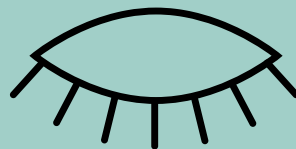


If people intended the plant to be there, mark it cultivated.



Take time to observe without your device

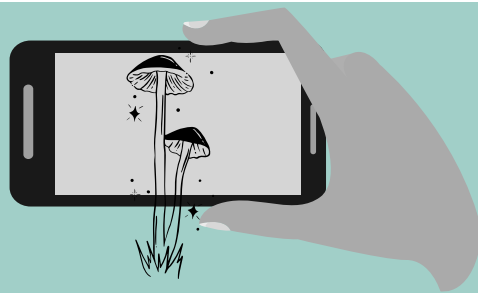
Close your eyes



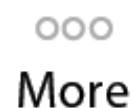
Let the other senses have a turn



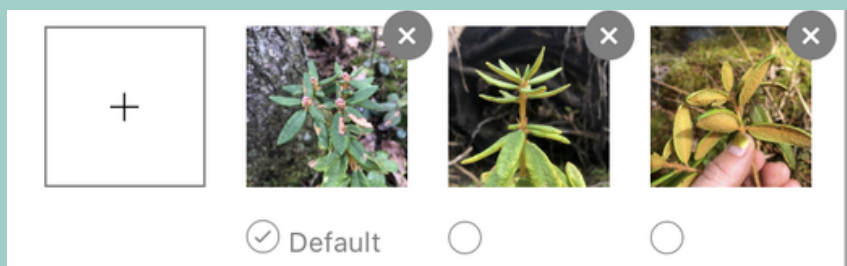
How to make an observation with your smartphone



Tap observe



Add one or more photos as evidence



Log different angles and close ups!

Name what you saw



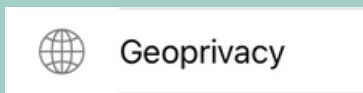
What did you see?

Use the artificial intelligence feature for a suggestion or search for what you think it is. If you are unsure, it's best to be general and say "plants" or "animals"

Add where you saw it



Location is added automatically. If it doesn't, check your settings!



You can also make observation locations private or obscured!

Upload to share with the community



Remember to check back later to see if others added identifications to any of your observations.



LEGACY
Land Conservancy
6276 Jackson Rd, STE G
Ann Arbor, MI 48103