

Legacy Land Conservancy

Annual Report 2021-2022



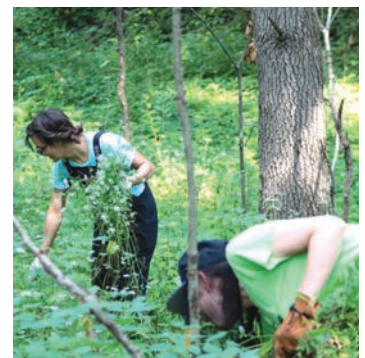
Red-winged Blackbird - Photo by Dave Foster

LEGACY
Land Conservancy



FY 2021-2022 Highlights

- Officially added Lenawee County to our service area
- Formally agreed to assume Raisin Valley Land Trust conservation easements
- Protected our 150th property
- Completed 4 land projects; 140 total acres protected
- Became a strategic partner with the Lenawee Intermediate School District
- Completed Phase 1 of the Shatter Family Preserve Trail Project
- Welcomed our 1st Huron Pines AmeriCorps member
- Kicked off the Preserve Accessibility Project thanks to an anonymous donor
- Chosen as a beneficiary of the Big House 5k



ANNUAL REPORT MESSAGE

What a difference another year can make!

When the pandemic first started, Legacy adapted but remained committed to our mission and focused on our love of the land. Over time, the ripple effect of the pandemic routinely slowed our work and challenged us in ways we didn't know possible. But, we were persistent. We leaned on each other, the generosity of our supporters, and the hope that better things were on the horizon.

Legacy held steadfast in our new way forward and by July of 2021, we were rewarded for our patience. Michigan began to slowly open up from the pandemic and its stringent protocols, and Legacy too, began to gradually emerge. There were still limitations, delays, and inconveniences, but there was much to celebrate—Legacy was back at the office, in the field, and into the community!

We welcomed the return of our in-person Land Partner Gathering, held multiple preserve volunteer workdays, and continued working to create more accessibility at our preserves thanks to a generous anonymous donor. With the help of stewardship crew members and our very first Huron Pines AmeriCorps member, we completed an enormous amount of invasive species removal and installed a new boardwalk at The Anthony & Rose Shatter Family Preserve.

We deepened our new commitment to Lenawee County by connecting with community members, leaders, and organizations, and developing new partnerships with groups like the Lenawee Intermediate School District and River Raisin Watershed Council. We also formally agreed to the enormous responsibility of assuming the conservation easements of the dissolving Lenawee-based Raisin Valley Land Trust.

Half way through the year, there was even more to revel in—the land protection log jam amplified by the pandemic finally broke free and our stalled land acquisition projects picked up steam! In a matter of months, we closed conservation easements on four remarkable pieces of land, protecting a total of 140 acres that benefit water quality and increase contiguous wildlife habitats within the River Raisin and Huron River watersheds.

Bringing these projects to the finish line is a win for our community, for

land protection, and for future generations of land lovers. Each acre we protect means a cleaner, healthier future for us all.

It has been a whirlwind of a year. Our conservation easement pipeline continues to grow at a tremendous rate as more and more people are joining Legacy to conserve the land, water, and natural spaces we all cherish. And, with numerous projects lined up, we're on track to protect another 1000 acres in the upcoming year.

It's clear we've got a lot of work ahead of us. Thanks to our wonderful community of supporters and the momentum we've gained in such a short time, we're confident that together we'll successfully work to protect these important lands.

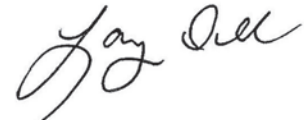
As we look ahead, we're working toward strategically planning for land stewardship thanks to Myrna Berlet, a generous Jackson County philanthropist. The gift she bequeathed to Legacy will help build a sustainable future of stewardship on our public nature preserves. Her legacy will be represented in the stewarding of these lands.

With your support Legacy is eager to ride the wave of land protection and stewardship opportunities to preserve even more of our beautiful forests, prairies, wetlands, farms, and waterways. We're so fortunate to have you joining us for the ride!

Yours in Conservation,



Diana Kern
Executive Director



Larry Doll
Board President



Staff, board, and volunteers celebrate together at the Session Room in Ann Arbor.

FY2021-2022 FINANCIAL REPORT

As Legacy slowly emerged from the pandemic, we were able to strengthen our financial position. Despite a downturn in the market that negatively affected our investments, we benefited from a large bequest early in the fiscal year.

Total revenue for the fiscal year was \$2.0 million, of which 78 percent was related to contributions and pledges. Making up a majority of these contributions was a \$1.2 million bequest. Investments declined due to the downturn in the markets. Gifts of land and development rights made up three percent of the total revenue as more land acquisitions were completed during the last half of the fiscal year.

Total expenses were approximately \$1.5 million, which doubled from the prior year. Our four main program areas — Land Acquisition, Easement Stewardship, Preserve Stewardship, and Community Engagement — made up approximately 77 percent of the total expenses. Not only were we able to continue our focus on preserve stewardship, but land acquisition activity increased. Four conservation easements were closed during the fiscal year, compared to one in the previous year.

Net income of \$680,520 increased over the prior year by approximately \$230,000. This increased our total net assets and strengthened Legacy's financial position as of June 30, 2022. Total net assets consist of \$4.7 million in fee land, \$1.2 million in endowment funds, and \$379,000 set aside for planned easement acquisitions.

Legacy's financial condition remains strong because of our generous donors as we continue emerging from the pandemic. We have healthy reserves which allow us to steward our protected lands and move forward with expansion into Lenawee County.

"Financial sustainability was a key focus for Legacy over the past year. We engaged with an expert in the field to come up with a 10-year Financial Sustainability Plan, which when properly executed will assure Legacy's future. A strong financial position is key to an organization whose mission is to steward land into perpetuity."

~Larry Doll, Legacy Board Chair

Statement of Financial Position June 30, 2022

ASSETS

Current Assets	\$ 758,987
Long Term Investments	\$ 3,216,792
Pledges Receivable (non-current)	\$ 7,700
Fixed Assets	\$ 7,200
Land Held for Resale	\$ 260,000
Preserves	\$ 4,597,418
Conservation Easements	\$ 91
Land Options	\$ 700

Total Assets **\$ 8,848,888**

LIABILITIES

Accounts Payable	\$ 3,630
Accrued Expenses	\$ 48,854
Long Term Debt	\$ —

Total Liabilities **\$ 52,484**

NET ASSETS

Without Restrictions	\$ 2,007,875
Land Held for Resale	\$ 260,000
With Restrictions	\$ 724,575
With Restrictions in Perpetuity	\$ 8,796,404

Total Net Assets **\$ 8,796,404**

Total Liabilities and Net Assets **\$ 8,848,888**

Statement of Activities

For Year ended June 30, 2022

REVENUE

Contributions and Pledges	\$ 2,183,926
Public Grants and Contracts	\$ 89,534
Miscellaneous	\$ 10,270
Interest, Dividends, and Investment gains	\$ (378,549)
Gifts of Land or Development Rights	\$ 135,500

Total Revenue and Support **\$ 2,040,681**

EXPENSES

Program Services—Land Protection	\$ 1,118,588
Management & General	\$ 228,998
Fundraising	\$ 105,398

Total Expenses **\$ 1,452,984**

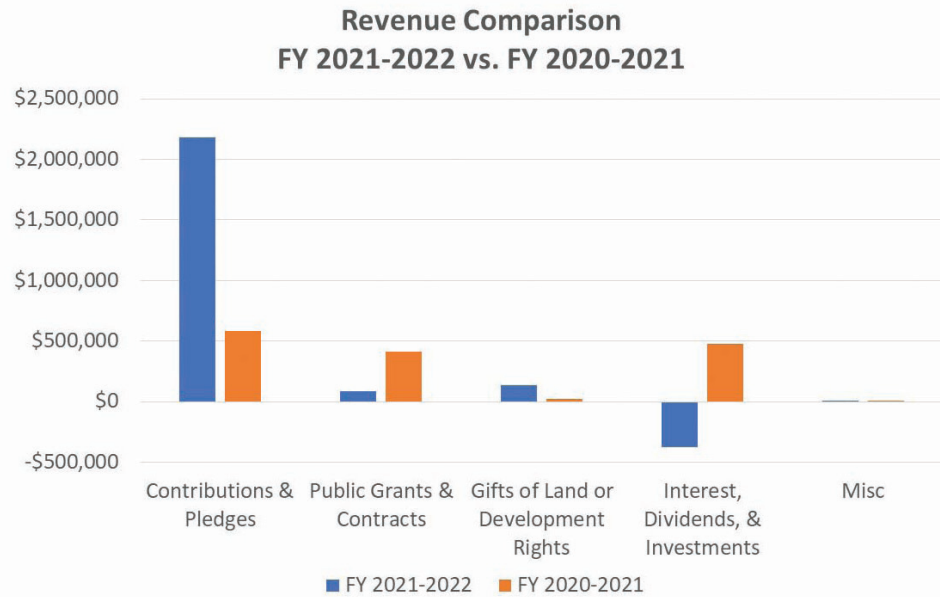
Change in Net Assets (Net Income) **\$ 587,697**

Net Assets, beginning of year **\$ 8,115,884**

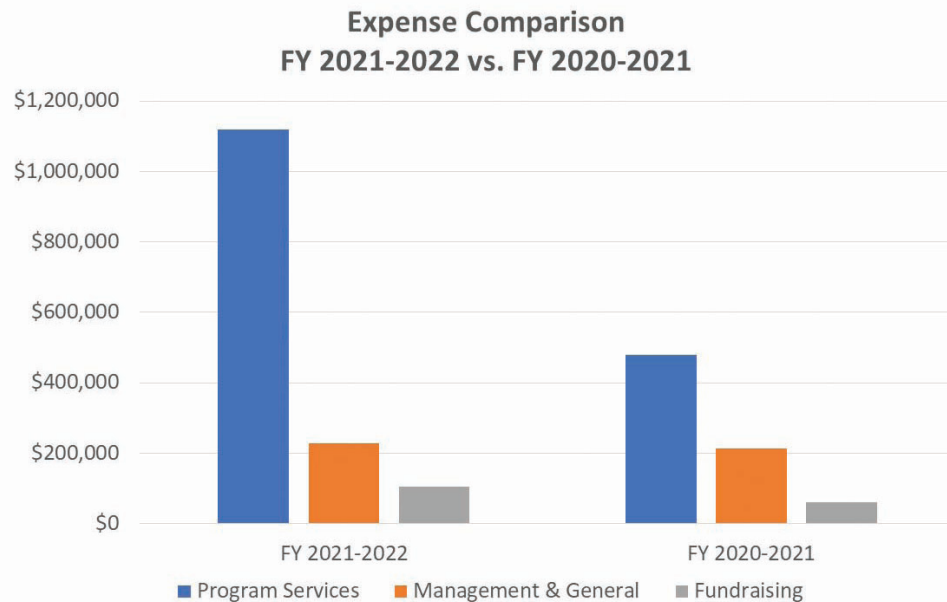
Net Assets, end of year **\$ 8,796,404**

*Based on audited financial statements. Full statements, prepared by Dennis, Gartland, Niergarth, CPAs, are available at legacylandconservancy.org.

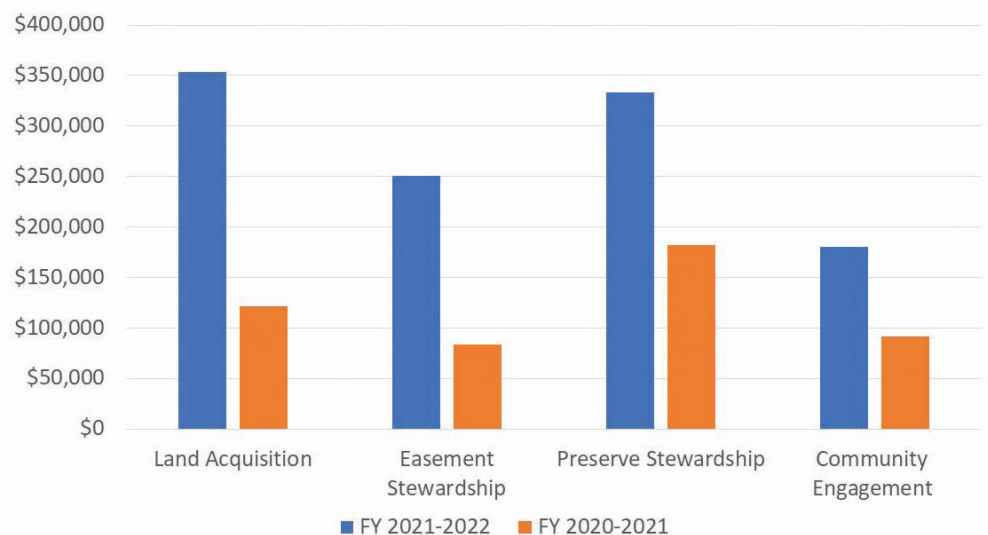
**FY 2021-2022
Revenue
\$2,040,681**



**FY 2021-2022
Expenses
\$1,452,984**



**Program Services Expense Comparison
FY 2021-2022 vs. FY 2020-2021**



PROTECTING LAND

Forging ahead

Acquiring new land and conservation easements is a complex, years-long effort. It's not unusual for an average project to take 3-5 years to complete. Given these circumstances, Legacy regularly manages multiple active projects all while fielding new inquiries and approving new projects that fill up our pipeline up to five years out. So, even though the pandemic created additional obstacles and delays that slowed aspects of acquisition work over the last two years, Legacy's land team was prepared to keep the land program forging ahead.

When the pandemic started, our ability to close existing projects was hampered. Simultaneously, we began fielding more new land inquiries from landowners at home reflecting on their land's future. What started out as a slight uptick in calls and emails abruptly surged, and helped swell our land acquisition pipeline.

At the same time, Legacy was expanding our outreach throughout Lenawee County, and we formally agreed to assume



Land Acquisition

FY 2021-2022
At a Glance

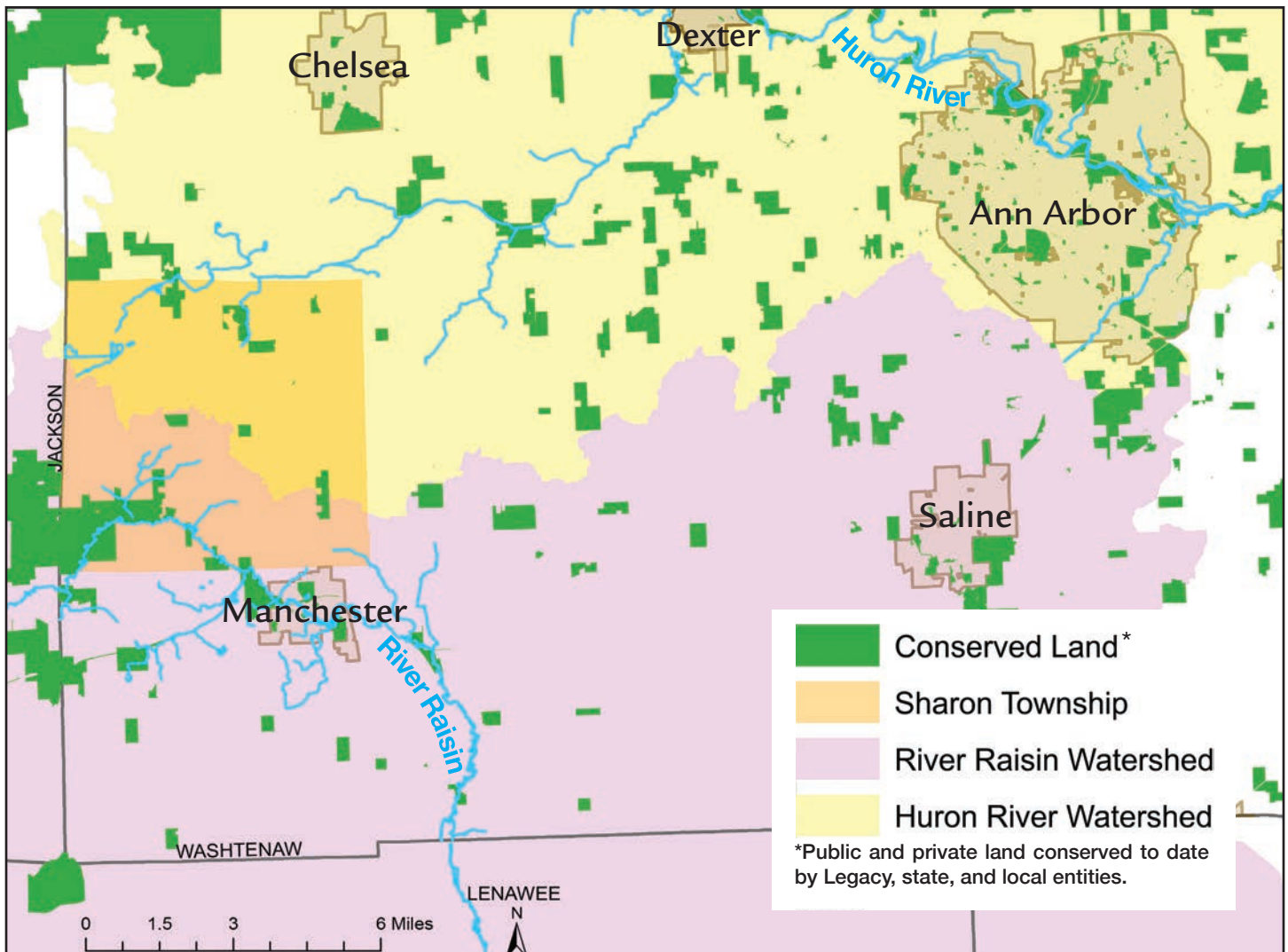


4 projects closed

- ✓ Purchased the H&H Conservation Easement in Washtenaw County
- ✓ Purchased the McCullough-Helmer Conservation Easements—Other Side of the River, Possum Trot, & Douglas Glen—in Washtenaw County

140 additional total acres protected

13 Raisin Valley Land Trust (RVLT) conservation easements! Agreeing to assume these easements and establish relationships with the landowners of an organization dissolving is only the beginning of a long and complicated process. The work required to get to closing day is complex and involves a lot of moving parts and people. It created a very long task list that required an enormous amount of staff resources.



To compensate for the increased workload, the land team shifted, reorganized, and added a part time staff member to help with the growing pipeline responsibilities. And just in time, too. The slowdowns amplified by the pandemic were fading, and some significant due diligence obstacles were resolved, breaking the land protection log jam and accelerating the pace of existing projects.

Incredibly, within six months Legacy closed on four conservation easements that had been in the pipeline for more than four years—H&H (53 acres), Other Side of the River (12 acres), Possum Trot (12 acres), and Douglas Glen (62 acres).

In total, these easements—all in the Sharon Township area of Washtenaw County—combined for 140 additional acres protected that benefit water quality and increase contiguous wildlife habitats in an existing corridor of protected land.

Despite another unpredictable year, we are ecstatic the pandemic-related slowdowns have eased, and we can get back to the more predictable obstacles we know and love! And, we are extremely grateful for our current landowners and the steady stream of interested landowners who entrust us with the future of their land. Their patience and dedication to preserving the land they love is inspirational and invigorates our passion for land protection.

Although COVID-19 is still among us, the pandemic's stronghold on our work is diminishing, and the future of land protection is gaining momentum. As we look to the future, we remain focused on securing funding for projects, while at the same time allowing space to incorporate new ideas within the dynamic landscape of innovative land protection. We are excited to continue building on our work and partnerships in Lenawee County, finalizing the assumption of RVL conservation easements, and protecting hundreds more acres throughout southern Michigan.

Conservation Value

- ✓ 140 total acres of forest, prairie, wetlands, and farmland protected in Washtenaw County
- ✓ Adds to existing protected lands in the Sharon Township area
- ✓ Increases connectivity of protected lands and provides contiguous wildlife habitat
- ✓ Benefits water quality of the River Raisin and Huron River watersheds
- ✓ Builds on River Raisin momentum; includes 3,850 feet of frontage that adds to existing protected lands along the river



Land protected in June 2022.

MANAGING LAND

Shifting stewardship

Legacy's preserve stewardship program continues to be shaped by the pandemic and our organization-wide commitment to integrate justice, equity, diversity, and inclusion principles into our work.

Even as the pandemic wanes, preserve visitation remains at an all-time high. The team continued its accessibility push to accommodate more visitors and eliminate barriers to enjoying the beauty of our preserves. Behind the scenes, the team finalized a Preserve Accessibility Project plan and cost projection that was years in the making. In the field, they spent hundreds of hours on trail maintenance and invasive species control.

Thanks to our seasonal stewardship crew members, our very first Huron Pines AmeriCorps member, and dedicated volunteers, we:

- Completed 2 prescribed burns - at Reichert Preserve and Lloyd & Mabel Johnson Preserve
- Installed Phase 1 of the Shatter Family Preserve Trail Project thanks to support from the Speckhard-Knight Charitable Foundation.
- Removed over 1000 pounds of herbaceous invasive plants
- Held 5 workdays with help from volunteers and partners - the Stockbridge Area Wellness Coalition, Stockbridge Area Arts Council, Eastern Michigan University (EMU), and Alpha Phi Omega at EMU, a gender inclusive community-service fraternity

After two years, it was a wonderful change to finally work side by side with staff, board, partners, and volunteers. As we build on our success, we look forward to remaining focused on creating welcoming places for visitors with more accessibility projects like the installation of trailhead kiosks and increased signage throughout the preserves.



Spring burns at Lloyd and Mabel Johnson Preserve (top) and Reichert Preserve (bottom)





Preserve Stewardship

FY 2021-2022
At a Glance



350 hours spent on accessibility

900 hours devoted to invasive species removal

116 hours contributed by 43 volunteers



By the numbers!



- 1020 hours of field work completed by the stewardship crew members



- 44 bags of herbaceous invasive plants removed



- 262 feet of boardwalk installed in 3 days



- 1st Huron Pines AmeriCorps member

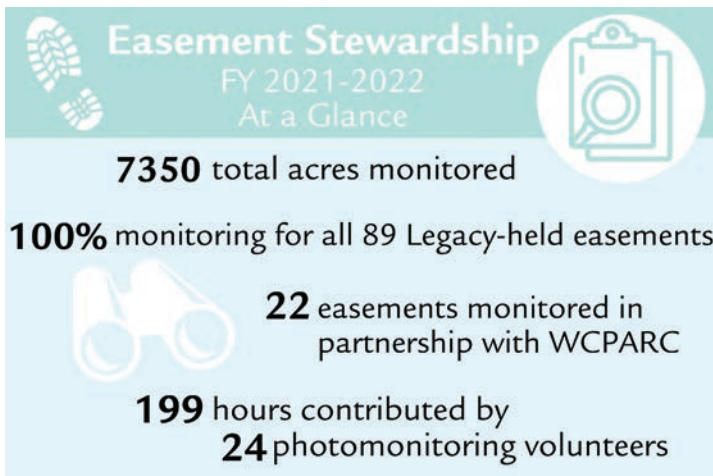
MANAGING LAND

Timely transition

A new fiscal year with fewer pandemic limitations allowed Legacy's easement stewardship program to transition from virtual back to in-person activities—a switch welcomed by all that also helped ease the transition to a new Easement Stewardship Coordinator. And, for the first time since 2019, staff and volunteers enjoyed getting together for photomonitoring training and the annual Land Partner Gathering!

The team reveled in the chance to meet volunteers face-to-face and deepen relationships at the spring photomonitoring training. Plus, they relished the added bonus of taking the coffee and presentation out onto the land for the first time in our annual Land Partner Gathering's history. Staff, landowners, and volunteers visited one of Legacy's conservation easements in Dexter to see a large-scale ongoing ecological restoration project—supported in part by a connection made at last year's virtual Land Partner Gathering.

The team also began the complex effort of preparing the incoming Raisin Valley Land Trust conservation easements for



integration into the monitoring program. When the process is complete, it will add 13 more easements and almost 700 acres to the 7,350 acres currently monitored by Legacy.

As the number of easements Legacy watches over grows year after year, one thing is certain: We couldn't do our work without our loyal volunteers. We are extremely grateful for their help! Thanks to our seasoned group of 24 photomonitors and their 199 volunteer hours this year, we achieved 100% annual monitoring on all Legacy-held easements.



Photomonitors catch up on the latest technology from Legacy staff.



Volunteer Steve Gilzow documents his photomonitoring visit.



Land Partner Gathering 2022 at a Legacy-held conservation easement in Dexter.

APPRECIATION

Did we mention Legacy has the most amazing volunteers?! Yes, it's true! We are so thankful to our volunteers who continue to step up and donate their time and energy.

We had fewer volunteers compared to last year, but they still contributed an astounding 1,320 hours—more hours than last year—WOW!

To all Legacy volunteers who improve our public preserves, monitor our easement properties, give us legal advice, provide us with sound governance, and keep our procedures running smoothly: thank you! We couldn't do our work without you.

Thank you,
volunteers!



1320 hours contributed
by **76** volunteers
in FY 2021-2022



Campbell Laird takes a water break during a workday at Beckwith Preserve.



Eastern Michigan University students remove common buckthorn from the woodland at Lloyd and Mabel Johnson Preserve.



Kai Garcia and Wynton Love head out to remove fencing at Johnson Preserve.

A Special Thank You!

- **Eastern Michigan University biology students and professors** – Thank you for your continued support cutting invasive shrubs at Johnson Preserve.
- **Peter and Anita Sandretto, Fran and Campbell Laird, and John Metzler** – Thank you for being super volunteers!
- Thank you to **Alpha Phi Omega at Eastern Michigan University**; especially **Kai Garcia** who attended multiple workdays, removed wire fencing, and made signs!
- Thank you to the outstanding photomonitoring team of **Charity Steere, Bill Steere, and Tania Evans**.
- **Marguerite Smith** – Thanks for organizing and typing up all our board and committee minutes!
- Thank you to all the attorneys for their help with land acquisitions, easement review, and legal advice — especially **Sandy Sorini Elser and Steve Palms!**



Peter Sandretto hides a geocache at Johnson Preserve.

2021-2022 Legacy Volunteers

Ann Agler*
 Rose Andrews
 Alexandra Audia
 Cynthia Avery
 Neal Billetdeaux
 Vincent Black*
 Rosanne Bloomer
 Meghan Bonfiglio
 George Borel
 Terry Brinkman
 John Chamberlin*
 Thomas E. Chettleburgh*
 Alexandria Chumney
 Sam Collie
 Aodan Craigie
 Lauren Dawn
 Matt Demmon
 Larry Doll
 John Dryden*
 Margaret Engle
 Tania Evans*
 Kyla Faligowski
 Olivia Felicelli
 Lauren Fochler
 Samuel Furness
 Kai Garcia
 Joseph Geisz
 Steven Gilzow*
 Maria Goodrich

Jacqui Grisdale*
 Emily Grman
 Lukas Gyomory
 Joan Hellmann*
 Yamille Hernandez
 Coriana Howard
 Jesse John
 Jennifer Kangas
 Lewis (Woody) Kellum*
 Ashlyn Kiedrowski
 Sybil Kolon*
 Ginny Leikam
 John Lloyd*
 Wynton Love
 Michael Machesky
 Ella Markel
 Lance McCarty
 James McCauley*
 Emma Metivier
 John Metzler
 John Moran
 Gerald Nordblom
 John Owen*
 Penny Owen*
 Steve Palms
 Michael Rader
 David Read*
 Sorbie Richner
 Steven Roach

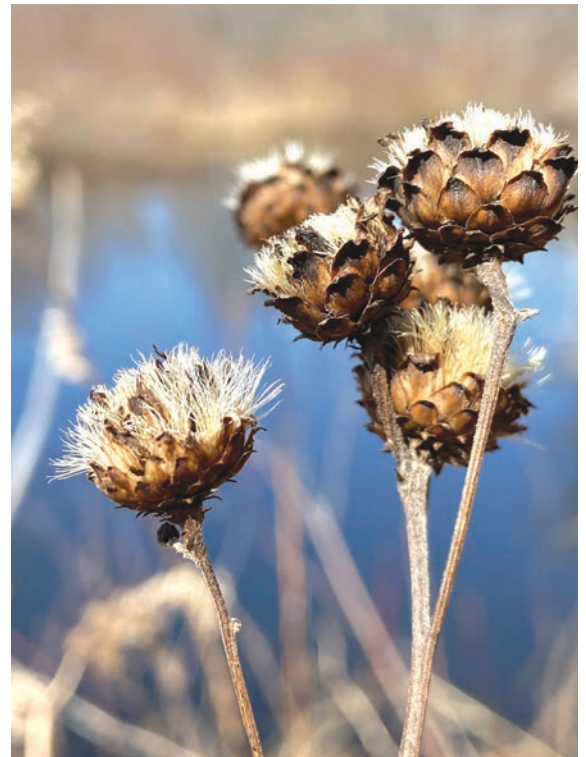


Photo by Patricia Sauer

Anita Sandretto*
 Peter Sandretto*
 Dale Sass
 Marguerite Smith*
 Andrew Snavelly
 Sandy Sorini Elser
 Bill Steere*
 Charity Steere*
 Scott Strodtman*
 William Strohaber
 Catherine A. Susan*
 Charlie Sutherland*
 Huntress Theibert
 Karen Ufer
 Deborah VandenBroek
 Hannah Walker
 Scott Weaver
 Simon Whitelocke

We try to keep our records up to date, but apologize if we have missed anyone. Please let us know if your name is missing!

*photomonitor



Volunteers at a Sharon Hills Preserve workday.

APPRECIATION

Thank you for your support!

Our community of dedicated supporters are the backbone of our work protecting and preserving the places we love. This year our community stepped up to the challenge of funding multiple land acquisition deals and critical accessibility work

on our preserves, as well as expanding our work into Lenawee County.

Generous donor gifts built boardwalks, fueled controlled burns, permanently protected creek frontage, and so much more. And a special \$25,000 gift from an anonymous donor kicked off our preserve accessibility project! We couldn't be more grateful.

Every gift made to Legacy makes a tremendous impact on our mission, helping to protect and preserve the land we share.

Thank you to our Forest and Farm Business Sponsors - Bank of Ann Arbor, Chelsea State Bank, and GreenStone Farm Credit Services!

All the work Legacy does to protect and preserve southern Michigan wouldn't be possible without the support of our foundation and corporate partners.

We are grateful for support from James A. & Faith Knight Foundation,
Cherry Republic, J. Ferrantino Charitable Foundation,
Harry A. & Margaret D. Towsley Foundation, and the Land Trust Alliance.

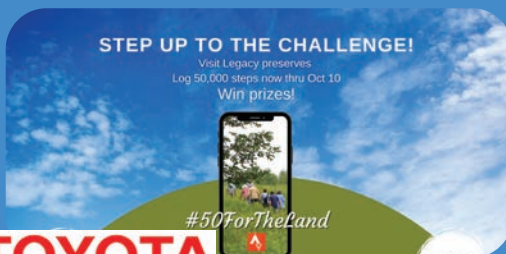
A special thank you to our special project partners!



BIG HOUSE 5K BENEFICIARY



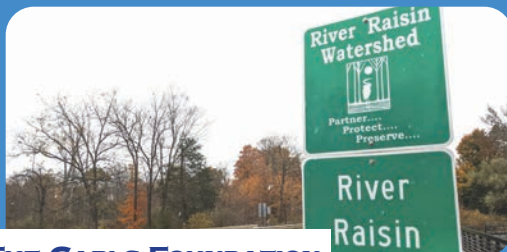
Dexter Community Fund
For Good. For Ever. For Dexter.



TOYOTA



ITC



THE CARLS FOUNDATION



THE Americana Foundation

Thank you!

Thank you for your support!

The following list includes gifts received in fiscal year, July 1, 2021 to June 30, 2022. If you believe we have made an error, please contact Krista Jacob at 734-302-5263 or kjacob@legacylandconservancy.org.



Non-native nodding thistle –
Photo by Harvey Michaels

Thank you to those who have made workplace-giving pledges or gifts through the United Way of Washtenaw County, Earthshare of Michigan, and Benevity Community Impact Fund.

Ameriprise Financial, Inc.
Apple
Stephen Bruder
David and Carol Clifford
Steve and Judy Dobson
Michael Fitzsimmons and Hope Haefner
Dan McAskin
Griff and Pat McDonald
Tom and Debby McMullen
Patrick and Carolyn McNamara
Novelis
Bill Spurlock
Donald Whitacre

Thank you to those who documented new multi-year pledges between July 1, 2021 and June 30, 2022. Commitments of this nature allow Legacy an increased stability to sustainably plan and carry out work that takes years to execute, and lasts forever.

Bank of Ann Arbor

Memorial and Honorary Gifts

In Memory of Margaret Gram
Marian and Paul Laughlin

In Memory of Shirley Mae (Logan) Hanson
Mt. Elliott Cemeteries

In Memory of Meroë Allen Kaericher
Michael and Dianne Kaericher
Marcia Van Fossen and Woody London

In Memory of Barbara Michniewicz
Erika Taylor

In Memory of Robert Miller
Helen Parker

In Memory of Stan Parker
Helen Parker

In Memory of Bill and Helen Pepler
Nancy Harrigan

In Memory of Anthony and Rose Shatter
Kathe Shatter

In Memory of George Stewart
Alison Neff

In Memory of Jan Willem Niklaas Zuidveld
Anonymous

In Honor of Ben Caldwell
Mary Caldwell

In Honor of Krista Jacob
Jade-Celene Keller

In Honor of Susan LaCroix
Sue Morley

In Honor of Barry Lonik
Gerald Nordblom

In Honor of Peter and Anita Sandretto
Anonymous

In Honor of Dale Sass
Katie Slicker
Frank and Lauren Zinn

In Honor of Bill and Sheila Sikkenga
Karen Sikkenga

In Honor of Adam Smith
Martha Coscina

In Honor of William Strohaber
Sydney Thomas

In Honor of Dari Stuhl and Bob Warner
Susan and Oliver Cameron

In Honor of Karen Ufer
Ian and Sally Bund



Volunteers and stewardship crew members add bags of garlic mustard to the compost pile during a Sharon Hills Preserve workday.



Damselfly - Photo by Dave Foster

Founders

Anonymous Donors (4)
 Americana Foundation
 Myrna Berlet†
 The Carls Foundation
 Michigan Department of Environment,
 Great Lakes, & Energy
 J. Ferrantino Charitable Foundation
 James A. & Faith Knight Foundation
 John and Fran Parker Charitable Gift Fund
 Bruce Watkins†
 Marguerite Smith
 The Harry A. and Margaret D. Towsley
 Foundation

Toyota Motor Engineering & Manufacturing
 North America, Inc.
 United States Department of Agriculture -
 Natural Resources Conservation Service
 Washtenaw County Parks & Recreation
 Commission

Partners

Michael Boehnke and Betsy Foxman
 The Conservation Fund -
 Midwest Regional Office
 ITC Holdings
 Land Trust Alliance - Midwest Program
 Ann Meredith

Diana Raimi and John Dryden
 James Reichert
 The Jack and Ginny Sinn
 Family Foundation
 Jean Wineman

Benefactors

Anonymous Donor (1)
 Ann Arbor Area Community Foundation
 Bank of Ann Arbor
 Cherry Republic, Inc.
 Judith Heady
 Judith Lobato
 John McCauley and Virginia Weingate
 Karen Sikkenga

Conservators

Deaver Armstrong
 Molly Bachelor
 Susan Blake
 George and Judy Borel
 Ian and Sally Bund
 Martha and Steven Ceccio
 Chelsea State Bank
 Suzanne DeVine and John Koselka
 Carolin and Macdonald Dick
 Mary H. Dobson
 Steve and Judy Dobson
 Michael Fitzsimmons and Hope Haefner
 GreenStone Farm Credit Services
 Brock Hastie
 Ann and Thomas Hunt
 Carol Kauffman
 David and Louise Lutton
 Thomas and Debby McMullen
 Sharon Morioka
 Mosaic Foundation
 Gerald Nordblom
 Arthur Nusbaum

Legacy Society

Our Legacy Society recognizes those whose values will be immortalized through a planned gift – a will, bequest, trust, annuity, insurance, or deferred gift – in support of Legacy's ongoing land protection mission. We are extremely grateful for the following Legacy Society members whose generosity will continue to make a difference for land conservation far into the future.

†deceased

Anonymous (3)
 Elizabeth S. Bishop
 Susan J. Blake
 Larry & Stephanie Doll
 Diane L. Dupuis
 Paul and Anne Glendon
 John S. Hand, PhD
 Judith Heady
 Sybil Kolon and Maan Abdulbaki

Susan Lackey and Steve Daut
 Lois McHenry
 Thomas and Deborah McMullen
 Margot K. Mehringer
 Jerry Nordblom and
 Barbara Michniewicz†
 Margaret M. Phillips
 Bill and Charity Steere
 Ann Surratt

Emeritus

Anonymous
 Myrna Berlet†
 Dale Crayne†
 Mary DuBois†
 John Fyfe†
 Dr. Rudy Reichert†
 Constance Rinehart
 Phil Surratt†
 Bruce Watkins†

Antoinette Pilzner and Daniel Moons
 Jennifer Poteat and Mike Staebler
 William and Karen Reichert
 Rick Taylor Real Estate
 Jim and Pam Rossman
 Bill Steusloff
 Andrea and William Stickney
 Deborah and William Strohaber
 Ann Surratt
 United States Department of Agriculture -
 Farm Service Agency
 Bill and Marlene Wenk

Sustainers

Anonymous Donors (4)
 Diane Arnold
 Mike and Kathleen Dul Aznavorian
 Brooks Barnes
 Tom and Rosanne Bloomer
 BorgWarner
 C.S. Mott Foundation
 Jonathan Cohn and Daniela Wittmann
 Charlie and Janet Crone
 Arun and Jennifer D'Souza
 Larry and Stephanie Doll
 Robert and Heidi Ewing
 Esther Floyd
 Frank W. Lynch & Roberta Jane Lynch
 Endowed Family Fund
 Julie Frost
 Steven Glauberman and
 Margaret Schankler
 Bob and Jane Grover
 Talbot and Jan Hack
 Yoshiko Hamano
 Craig Harvey
 Gregg and Judy Heidebrink



Mayapple - Photo by John Lloyd

Maurita Peterson Holland
 Kent and Mary Johnson
 Brad and Lisa Judge
 Michael and Dianne Kaericher
 Frances and Campbell Laird
 Land Trust Alliance - National
 John Lloyd and Sue Budin
 Bob Martel and Lisa Sessa
 Edith (Teddy) Maynard
 Patrick and Carolyn McNamara

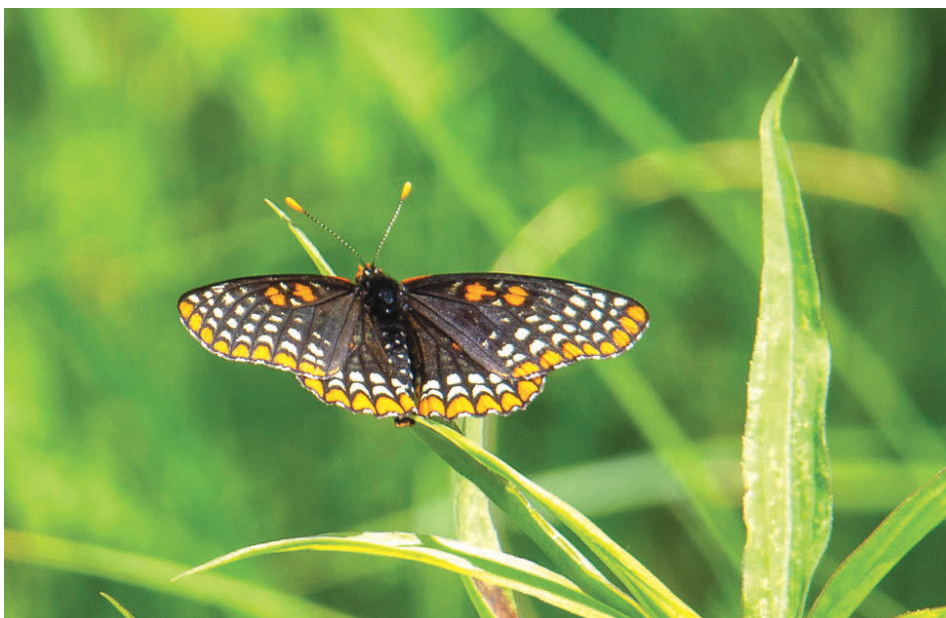
McNaughton & Gunn, Inc.
 Andrew Muth and Patricia Saad
 Peter and Alicia Olin
 Steve and Betty Palms
 Jim and Nancy Paul
 Maggie Phillips
 Lana and Henry Pollack
 Retirement Income Solutions
 Terry Richards
 Mack Ruffin and Kathy Carter
 Elvera Shappirio
 Mark Skowronski
 Martha S. Weintraub and Peter D. Smith
 Family Fund
 Timothy Sochocki
 Doug Elser and Sandy Sorini Elser
 Toni and Ken Spears
 Charity and Bill Steere
 Jonathan Sugar and Nancy Barbas
 June Swartz
 Arlene Taylor and Matt Laux
 TRUE Community Credit Union
 Ruth Vail
 Arthur and Renata Wasserman
 Wildlife Forever Fund



Skunk cabbage bud - Photo by Kateri Fahey

Champions

Anonymous Donors (2)
 Karen Adams
 John Bassett
 James Bergman and Penelope Hommel
 Victor Boccalon



Baltimore checkerspot butterfly at Reichert Preserve - Photo by Harvey Michaels

Carolyle Towers
Herbert and Anne Upton
Byron and Corinne Vivian
Waterloo Hunt Club
Susan and Peter Westerman

Friends

Anonymous Donors (10)
Jim and Jan Albers
Ameriprise Financial, Inc
Apple
Michael and Diana Arnold
Carl and Janice Bach
John and Erin Bardsley
Margaret Bignall and Paul Hossler
Elizabeth Bishop
Meghan and Carl Bonfiglio
Rusty Brach
David and Sharon Brooks
Cindy Browne
Gary and Shelley Bruder
Stephen Bruder
Carol Buatti
Trudy Bulkley
Mary Caldwell
David Cardwell
Sue and Richard Chase
Latham and Kathryn Claflin
Victor Clore
Robert Cohen and Ruth Moscow-Cohen
John Copley and Janice Berry
Martha Coscina
Clark Davis
Tom and Margaret Demmon
David Dickinson and Jeannine LaPrad
Andrzej and Cynthia Dlugosz

Patrick Burgett
Susan and Oliver Cameron
Gerald Clark and Shutta Crum
David and Carol Clifford
Bill and Joyce Connett
Michael Dempsey
Dempsey Inc
Steve and Janine Easter
Facebook Payments, Inc.
Reno and Nancy Feldkamp
Richard Fowler
Bernard Friedman
Jerald Frost
Carol Furtado
Paul Gambka
Carola Gerigk
Grass Lake Medical Center
Norma and Daniel Green
Bart and Maribeth Hammer
Julia Henshaw and Judith Moldenhauer
Kay Holsinger and Douglas Wood
Erika Homann and Michael Wellman
Mary James
Joe and Jude Jarecki
Richard Kato
Diana Kern
Kristine and Donn Kipka
Sandra and Alan Kortesoja
Susan Lackey and Steve Daut
Marian and Paul Laughlin
Chip and Kathleen Letts
Michael and Shirley Martin
Richard and Ann Mary McCarthy
John and Sheri McLelland
John Metzler
David Mindell and Jennifer Gager

Alexandra and Matthew Moore
Mim and Dan Munzel
Joe O'Neal and Karen Koykka O'Neal
Marc and Emily Olson
Orion Automotive Services
Linda Palmer
Adela Pinch
Timothy and Patricia Redmond
Jane Schmiedeke
Kenneth Shaw
Clark and Amy Shuler
Eugene Su and Christin Carter-Su
Matthew Toschlog and Victoria Green



Ally Audia, Chris Boyce, and Kyler Moran prep lumber to build boardwalk at Shatter Family Preserve.



Wild turkeys walk through a field during a photomonitoring visit - Photo by John Lloyd

Donald Doll
 Brenda Donaldson
 Amy Donoghue
 Dawn Earll-Thomas
 EarthShare of Michigan
 Cary and Suzy Engleberg
 Jim and Deirdre Fidler
 James Fish
 Carol Fletcher
 Mr and Mrs Karl Frankena
 Gerald Gardner
 Anne Gardner Remley
 Beth Glover Reed
 Richard Grant
 Helen and Edward F Greene
 Jacqui Grisdale
 Mark Haddox
 Joan Harris and Ed Sarath
 Bruce and Grace Harrison
 Carolyn Hastings
 Suzie and Bob Heiney
 Glenn Hendrix
 Les and Judy High
 Peggie Hollingsworth
 William Holmes
 Andrew and Catherine Horning
 Susan and Dave Horvath
 James House and Wendy Fisher House
 Kenneth and Carol Hovey
 Gary and Kathleen Huffnagle
 Ray and Stephanie Hunter
 Angela Johnson
 Kathleen Johnson
 Willard Johnson
 Erika and Ralph Keith
 Lew Kidder

Edith Kieffer
 Gloria King
 Rich and Suzanne Kisler
 Christy Klim
 William Knapp
 Ron and Rosalie Koenig
 Sybil Kolon and Maan Abdulbaki
 Linda Lamoreaux
 Leslie and Dennis Lampron
 Kevin and Katie Lavery
 Theodore and Wendy Lawrence
 Dave and Sarah Lynch
 Robert W. and Judith Marans
 Dan McAskin
 James and Denise McCauley
 Dria McCauley
 Griff and Pat McDonald
 Margot and Tom Mehringer
 Kate Mehuron
 Harvey Michaels and Gloria Helfand
 Mt. Elliott Cemeteries
 Tim and Penni Moran
 Sue Morley
 Morley Family Foundation
 Thomas and Gail Mroz
 Jo Ann and Gary Munce
 Stephen Musko and Sarah Hess Musko
 David Myer
 Alison Neff
 Chuck Nicewonder
 Novelis
 Darrin O'Brien and Julie Craves
 Elizabeth Ong
 Walter and Jill Ortmann
 Helen Parker
 John and Mary Pedley

Kathleen Phillips
 Thomas Porter
 Jeffrey and Joanna Post
 Dr. Richard and Laurie Prager
 Ellen and Stephen Ramsburgh
 Pat and John Reynolds
 Richard and Linda Ridley
 David and Patricia Rogers
 Glen and Marge Rutila
 Peter and Anita Sandretto
 Manfred and Judith Schmidt
 Mary Schmitt
 Paul Scholl
 Patricia Tupacz Scribner
 Bill Secrest and Misty Callies
 Miriam Beth Shaw
 Robert Silbergleit and Catherine Zudak
 Steven Slack and Patricia Joyce
 Katie Slicker
 Betty and Warren Smith
 Jonas Snyder
 Harvey Somers
 Gary Stelzer and Nancy Frushour
 Paul and Eulalia Stewart
 Carol Strahler
 Rebecca Swank
 James Szocik and Karin Tice
 Erika Taylor
 Patrick and Joan Thompson
 David and Karen Ufer
 Eric and Franziska van der Schalie
 Beverly Walters
 Rocky and Judy Ward
 Joan and Will Weber



Southern blue flag iris reflecting in water - Photo by John Lloyd

Alan Weintraub
Helen Welford and Robin Warner
Cherry and Kenneth Westerman
Donald Whitacre
Gordon Wilson
Charlotte Wolfe
Roger Wykes
Julie Young
Carl and Laura Zang

Supporters

Anonymous Donors (3)
Terry Adams and Barbara Lamar
AmazonSmile Foundation
Cathy Bach and Brian Hazlett
Brenda Baker
Thomas Bejma
Steve and Judith Bemis
Pam Bierzynski and Timothy McGahey
Marcia and Donald Bracciano
Nancy Brucken
Dennis Cooperson
Marilyn Couture
Thomas Longworth and Carol Cramer
James Crowfoot and Ruth Carey
Mark Delaney
Patricia Dieter
Morgan and Sally Edwards
Carolyn Ferrell and Lorin Burgess
Betsy Foote and Tom Gebhardt
Gregg and Brenda Franz
Marija Ruta Freeland
Tom and Catherine Freeman
Jason Frenzel



Gray treefrog rests on a log at Sharon Hills Preserve - Photo by Xu Zhou

Lourdes Gago
Ron Gamble and Faye Stoner
William and Marjorie Gentner
Earl Goddin and Catherine Riseng
Laurence and Nancy Jo Goldstein
Kathleen Graddy
Fred and Iris Gruhl
Georgette and Keith Hansen
Nancy Harrigan
Brett and Lynn Harris

Susan Hartman and Stuart Cohen
Deborah Hartsuff
Dave Heritier
Edie Herrold
Alice Hinterman
Walter Hogan
Rebecca Horvath
Sharon Iverson
Stephen Johgart
Anthony Joseph and
Kathleen Albrecht Joseph
Harvey Juster
Rachel and Stephen Kaplan
Sylvia Kay
Jade-Celene Keller
Sally Kennedy
Laura Khailany
Bruce and Mary Klosner
Julia Koths
Faith and Ralph Krug
Anita Lamour
Mary Mahony and Paul Smith
Daniel and Kay Maloney
Jo Mayer and Paul Crandall
Cathryn and Ronald McCready
Dennis and Carole McNamara
Suzy Morse
Glenn Muhr
David and Jeanne Neuhoﬀ
Kelly O'Donnell
Andrew Overmire and Stephanie Buttrey
Shannon and Steve Owsinski
Walter Parry
Dianne Patrick and Mark Mitchell
Beth Louise Green Peace



Eastern Michigan University student cuts common buckthorn during Johnson Preserve workday.

Lawrence and Susan Peterman
 Eunice Phillips
 Michaline Prais
 Meghan, Mike, Joe, and Elizabeth Prindle
 Susan Rauschl
 David Rein
 Susan Reinhart
 Mary Relson
 Ruth Riegel
 Maxwell Sanborn
 Kathryn Sargeant and
 Thomas E. Chettleburg
 Robert and Kathleen Savit
 Jeanie and Robert Schultz
 Kathee Shatter
 Clifford and Ingrid Sheldon
 Robert Sigler
 Mr and Mrs John Smellie
 Bill Spurlock
 John St. John
 Julie Stachecki
 Cynthia Stewart
 Sydney Thomas
 Scott Trowbridge and Jean Holther
 Marcia Van Fossen and Woody London
 Bill Vargo
 Renee Vettorello
 Thomas and Mary Wakefield
 Martin Walsh and Margarete Orlik-Walsh
 Kurt Weber
 Sandy and Jon Wedemeyer
 Paul Winder
 Ed and Corazon Yee
 Frank and Lauren Zinn

Farmland Fund

Ann Arbor Area Community Foundation
 Anonymous Donor
 Carl and Janice Bach
 Carol Buatti
 Charlie and Janet Crone
 Gerald Gardner
 James Szocik and Karin Tice
 Rocky and Judy Ward

Fresh Waters Fund

Darrin O'Brien and Julie Craves

Stewardship Fund

Anonymous Donor
 Michael and Diana Arnold
 Meghan and Carl Bonfiglio
 Trudy Bulkley
 Jacqui Grisdale
 ITC Holdings
 Michael and Dianne Kaericher
 Richard Kato
 Sylvia Kay
 Leslie and Dennis Lampron

Edith (Teddy) Maynard
 David Mindell and Jennifer Gagern
 Tim and Penni Moran
 Mim and Dan Munzel
 Michaline Prais
 Marguerite Smith
 Bill Steusloff
 Andrea and William Stickney
 Deborah and William Strohaber
 Toyota Motor Engineering & Manufacturing
 North America, Inc.
 David and Karen Ufer
 Marcia Van Fossen and Woody London

Public Recreation/Waterloo Fund

Latham and Kathryn Claflin
 Angela Johnson
 McCready Kids of Hemlock Hollow
 Charitable Fund

Shannon and Steve Owsinski
 Arlene Taylor and Matt Laux

Reichert Preserve Fund

William and Karen Reichert
 Kurt Weber

In-Kind Donors

Larry and Stephanie Doll
 Graham Graphics, LLC
 Hyperion Coffee Co.
 Nativescape LLC
 Steve Palms
 Steven Roach
 Mark Snyder
 Sandy Sorini Elser
 Target Corporate Giving
 Waterloo Hunt Club
 Zingerman's Community Giving



AmeriCorps member Ally Audia carries lumber to build the Shatter Preserve boardwalk.



Photo by Robin Burke



LEGACY
Land Conservancy

*Protecting and Preserving
Southern Michigan*

CONTACT

734-302-5263

info@legacylandconservancy.org

legacylandconservancy.org



STAFF

Pam Bierzynski, Donor Stewardship & Communications Manager | **Mario Black**, Business Manager

Krista Jacob, Development Associate | **Kyto Katori**, Easement Stewardship Associate | **Diana Kern**, Executive Director

Susan LaCroix, Land Protection Manager | **Clint McGill**, Easement Stewardship Coordinator | **Kyler Moran**, Preserve Stewardship Manager

Michelle Sigakis, Director of Finance & Operations | **Allene Smith**, Land Protection Specialist

Cayla Tinney and **Shawn Zellers**, Reichert Preserve Caretakers

TRUSTEES

Larry Doll, President | **Ginny Leikam**, Vice President | **George Borel**, Treasurer | **Karen Ufer**, Secretary

Jeff Lake | **John Moran** | **Jerry Nordblom** | **Brenda Pilgrim** | **Dale Sass** | **Shikha Singh** | **Sandra Sorini Elser** | **Bill Strohaver** | **Simon Whitelocke**

© 2023