

# Legacy Land Conservancy

Annual Report 2020-2021



---

LEGACY  
Land Conservancy

---

## ANNUAL REPORT MESSAGE

*Challenging. Stressful. Inspirational. Thankful. Grateful. Hopeful.* These are just some of the words that come to mind when thinking of the last year. When Legacy was thrust into uncharted waters navigating the uncertainties brought about by the COVID-19 pandemic in March of 2020, we did not fully know what the many months ahead had in store for us. However, we found strength in our ability to adapt and held steadfast in our new way forward.

As Legacy's new fiscal year began in July of 2020, we were four months deep into the pandemic. Our physical office was still closed, and staff was working remotely. With more people than ever relying on nature and accessing our preserves, we remained committed to our mission and focused on our love of the land. We strategically continued our most important activities as they pertained to land protection, and we moved forward thoughtfully with a commitment to integrate justice, equity, diversity, and inclusion principles into our work and throughout our organization.

We leaned on each other, the generosity of our supporters, and the hope that better things would be on the horizon. Eventually, we said goodbye to 2020 and welcomed 2021, embracing a new year with a fresh start and new opportunities (the rollout of COVID-19 vaccines!) - and the chance to celebrate an amazing accomplishment: 50 years of protecting and preserving land in southern Michigan!

We are always proud of our Legacy team, but this year, we are especially proud. The dedication of our staff, board, and volunteers during one of the most difficult and challenging times in our history is a testament to Legacy's ongoing commitment to protecting land in Michigan—forever. We are truly inspired by our team and what we accomplished with the support of so many.



*Diana Kern and Larry Doll snap a selfie with the newest Land Trust Accreditation certificate.*

The pandemic may have slowed our work, but the silver lining is that it gave us more time to reflect, to navigate our future, to adjust, adapt, and make changes. It gave us the space to be thankful and the strength to persevere. And, it gave us the chance to connect in unconventional ways with many more of our current and past supporters than we ever thought possible.

We are so thankful for our founders and for everyone who has supported us along the way these past 50 years. Legacy is extremely grateful for the hard work and dedication of every volunteer, partner, trustee, staff, landowner, and donor—who has brought us to this moment. Our success is the result of a collective belief that protecting and preserving land is a responsibility we all share.

This year, taking time to celebrate a remarkable milestone, our accomplishments, and the wonderful people—like YOU—who make it possible, took us on an amazing journey. We emerged refreshed, recharged, and full of new energy and focus which will help us tackle pressing issues like climate change, the loss of family farms, dwindling wildlife habitats and species degradation, a lingering pandemic, and the increasing risks to Michigan's clean, fresh water.

As Legacy embraces the next phase of our work, we are committed to innovative land protection and making a larger collaborative impact as a trusted, professional partner. Recently, we officially added Lenawee County into our service area. We eagerly anticipate developing partnerships and growing our positive impact on important farmland and water quality in local watersheds and the entire Great Lakes basin.

Whether you have been with us since the very beginning or have recently joined us, THANK YOU! Your support makes our work possible and it helps us remain *hopeful* and confident about the future. Together we've successfully navigated through the first fifty years. And together we will continue the journey to ensure that the next fifty will be just as successful! We look forward to building a future of clean water, healthy ecosystems, accessible recreation, and a thriving farming community with you.

*Yours in Conservation,*

*Diana Kern  
Executive Director*

*Larry Doll  
Board President*

### FY 2020-2021 Highlights

- renewed our land trust accreditation for the second time
- opened our seventh public preserve—The Anthony & Rose Shatter Family Preserve
- held our first-ever virtual Land Partner Breakfast
- protected a 158-acre sesquicentennial farm
- formed a Justice, Equity, Diversity, and Inclusion (JEDI) Council that helped create an organization-wide JEDI commitment
- celebrated our 50th anniversary (complete with a virtual gala and online auction!)
- strengthened our regional partnerships



*Shatter Preserve, photo by Susan LaCroix*



# FY2020-2021 FINANCIAL REPORT

Despite a challenging year with the pandemic, Legacy was able to hold financially steady in 2020-2021 by extending expense saving strategies implemented the previous fiscal year, securing a PPP Loan, and enjoying strong investment returns.

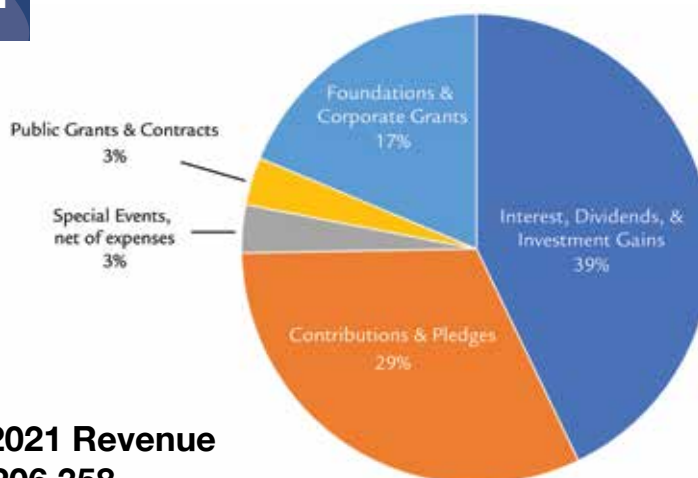
Legacy's efforts to diversify revenue helped to temper significant, unpredictable swings in giving trends throughout the year. Total revenue at year-end was \$1,206,358. Thirty-nine percent is from maximized investment returns on Legacy's long-term endowment funds and operating reserves. Twenty-nine percent is from individual contributions, many of which were in honor of our 50th year. Private and public grants made up 20% of revenue, which is slightly lower than previous years.

Total expenses were \$752,980. Sixty-four percent of those expenses went to support our four main program areas: Land Acquisition, Easement Stewardship, Preserve Stewardship, and Community Engagement. For a second year in a row, Legacy spent more money on Preserve Stewardship than on Land Acquisition. The pandemic has complicated and slowed completing land acquisition transactions while increasing preserve visitors, so we remained focused on preserve accessibility and issues related to increased preserve traffic.

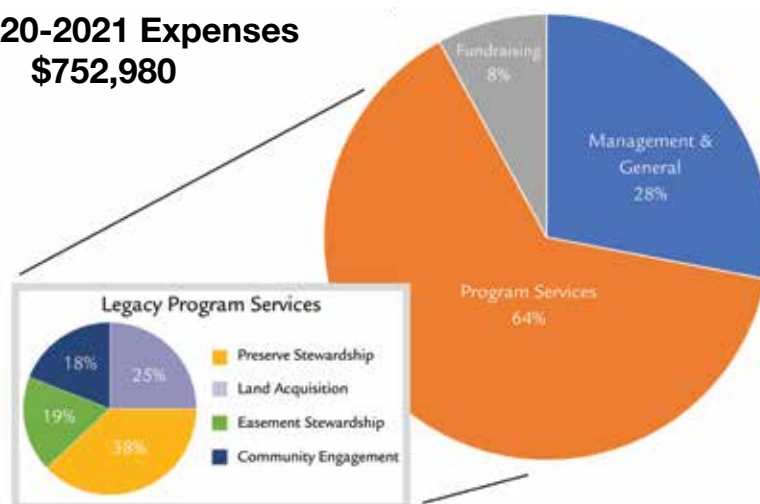
Net income was \$453,378 which leaves Legacy with a one-year cushion of unrestricted reserves and funds set aside for our next three land acquisition projects. Total net assets are \$8,115,884, which includes \$4.7 million in fee land, \$1.2 million in four endowment funds, and \$593,000 set aside for planned easement acquisitions.

Although the pandemic shifted our focus as more people visited the preserves and land acquisitions slowed, Legacy met our financial goals and is in a solid financial position with healthy reserves and future project funding secured.

## FY 2020-2021 Revenue \$1,206,358



## FY 2020-2021 Expenses \$752,980



### Statement of Financial Position June 30, 2021

<b>ASSETS</b>	
Current Assets	\$ 501,350
Long Term Investments	\$ 2,898,233
Pledges Receivable (non-current)	\$ 4,100
Land Held for Resale	\$ 260,000
Preserves	\$ 4,597,418
Conservation Easements	\$ 87
Land Options	\$ 1,400
<b>Total Assets</b>	<b>\$ 8,262,588</b>
<b>LIABILITIES</b>	
Accounts Payable	\$ 5,058
Accrued Expenses	\$ 48,823
Long Term Debt	\$ 92,823
<b>Total Liabilities</b>	<b>\$ 146,704</b>
<b>NET ASSETS</b>	
Without Restrictions	\$ 956,528
Land Held for Resale	\$ 260,000
With Restrictions	\$ 835,837
With Restrictions in Perpetuity	\$ 6,063,519
<b>Total Net Assets</b>	<b>\$ 8,115,884</b>
<b>Total Liabilities and Net Assets</b>	<b>\$ 8,262,588</b>

### Statement of Activities For Year ended June 30, 2021

<b>REVENUE</b>	
Contributions and Pledges	\$ 350,156
Corporate and Foundation Grants	\$ 201,619
Special Events, net of expenses	\$ 34,856
Public Grants and Contracts	\$ 141,582
Miscellaneous	\$ 2,348
Interest, Dividends, and Investment gains	\$ 475,796
Gifts of Land or Development Rights	\$ 1
<b>Total Revenue and Support</b>	<b>\$ 1,206,358</b>
<b>EXPENSES</b>	
Program Services—Land Protection	\$ 478,331
Management & General	\$ 212,852
Fundraising	\$ 61,797
<b>Total Expenses</b>	<b>\$ 752,980</b>
<b>Change in Net Assets (Net Income)</b>	<b>\$ 453,378</b>
<b>Net Assets, beginning of year</b>	<b>\$ 7,662,509</b>
<b>Net Assets, end of year</b>	<b>\$ 8,115,884</b>

\*Based on audited financial statements. Full statements, prepared by Dennis, Gartland, Niergarth, CPAs, are available at [legacylandconservancy.org](http://legacylandconservancy.org).

## PROTECTING LAND

### Persistent protection

**A**lthough the ongoing pandemic created a challenging work environment for the land team again this year, Legacy successfully continued its land acquisition work thanks to a combination of adjustments already implemented during the end of the previous fiscal year and the unwavering commitment of our landowners.

Undeterred by challenges like the elimination of most in-person meetings and due diligence delays that slowed aspects of the acquisition work, Legacy staff persisted. We constantly refined and adjusted partner and landowner communications throughout the year. And as unforeseen obstacles arose, the land team remained nimble and skillfully ushered new and existing projects forward.

Legacy's land team successfully closed the Irwin Farm Conservation Easement (158 acres) and assisted the Ann Arbor Greenbelt in acquiring the Buesser Conservation Easement (30 acres), both in Washtenaw County.

In total, these two projects combined for another 188 additional total acres protected, bringing our 50-year total acres of land protected to 9,558!

Despite the pandemic and other unanticipated complications affecting our ability to close projects, we forged ahead with other aspects of land protection. Five new land projects were approved and added to the land acquisition pipeline. We continued to field more new land inquiries, and began laying the groundwork for expanding our work and partnerships in Lenawee County.

Protecting nearly 10,000 acres of land in fifty years is an extraordinary accomplishment, and it's a testament to the



### Land Acquisition

FY 2020-2021  
At a Glance



#### 2 projects closed

- ✓ Purchased the Irwin Conservation Easement in Washtenaw County
- ✓ Assisted the Ann Arbor Greenbelt in acquiring the Buesser Conservation Easement in Washtenaw County

#### 188 additional total acres protected

amazing people who helped make it possible. During this difficult year, it is even more clear that the land protection work Legacy does depends on the support of so many. We are so grateful to everyone, especially our partners and the dedicated landowners, who remain flexible throughout it all. We are thankful for their patience, understanding, and above all, their commitment to the land.

In the coming years, Legacy is poised for more success. In 2022, we anticipate closing on three conservation easements in Washtenaw County and one in Jackson County and assuming multiple conservation easements in Lenawee County, which will bring our total conserved land to over 10,000 acres! And, our land acquisition pipeline has 14 projects lined up through 2024. Combined, they total 1055 acres and will cost an estimated four million dollars.

Celebrating 50 years of protecting and preserving land this year has recharged us. We are grateful for the new energy and focus that will help us deepen partnerships and expand collaborative land protection throughout southeast Michigan for the next fifty years.



*The Irwin Farm. The third of five identified properties conserved using money secured through a multi-project fundraising challenge made possible by the Carls Foundation and a diverse group of donors.*

## MANAGING LAND

### A year of firsts

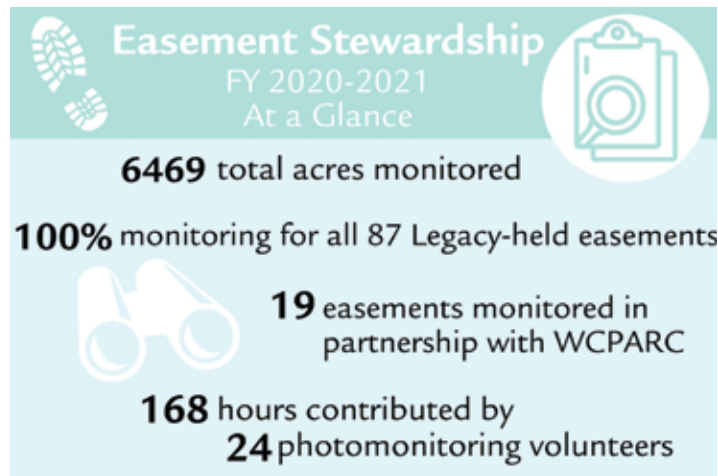
A new fiscal year may have brought with it many of the same difficulties we faced at the end of last year, but it also gave Legacy's easement stewardship program some unexpected firsts. After the departure of our longtime Volunteer Coordinator and Stewardship Manager, Legacy hired a new Easement Stewardship Coordinator and Seasonal Stewardship Technician. The entire hiring and on-boarding process was done via Zoom, which jumpstarted a predominately virtual year.

Unfazed by mostly communicating with staff, volunteers, and landowners through a computer screen, Legacy embraced technology and held its first-ever virtual Landowner Partner Breakfast. We missed in-person coffee and pancakes, but



A horse oversees volunteer Jim McCauley's work during a photomonitoring visit.  
Photo by John Lloyd

we still connected landowners with valuable resources and stewardship funding opportunities. After the presentation, a landowner enrolled in the Partners for Fish and Wildlife Program and will be restoring native prairie on their property!



Legacy also held its first-ever virtual photomonitoring volunteer training. Even though it was more complex, our volunteers handled the training, as well as complicated monitoring technology upgrades, with ease. And, thanks to our dedicated and flexible group of 24 photomonitor volunteers and their 168 volunteer hours, we achieved 100% annual monitoring on all Legacy-held easements.

The easement stewardship team is grateful for all its very understanding volunteers and easement landowners during another challenging year. With their support, Legacy continues to uphold the conservation values of the land we protect and we are equipped to manage the assumption of numerous Raisin Valley Land Trust easements in 2022.

### Strategic stewardship

As the pandemic carries on and more people than ever continue to rely on nature for its physical, spiritual, and mental health benefits, Legacy's preserves remain a resource for the community.

Confronted with increased preserve use and a difficult work environment as a result of the pandemic, Legacy's preserve stewardship team diligently moved forward our most vital accessibility and management work throughout all seven public nature preserves. In addition to hundreds of hours spent on accessibility projects like trail maintenance and signage, hundreds more were devoted to habitat restoration projects like invasive species removal.

And while much the year focused on strategically fulfilling stewardship needs, Legacy celebrated the opening of the Anthony and Rose Shatter Family Preserve in August and the return of volunteer workdays in March. We also turned our focus inward. As preserve visitation increases and awareness of equity and inclusion issues related to land access heightens, staff is initiating a deep dive into comprehensive preserve planning and management to reflect the shifting landscape.



We are grateful for the staff, board, partners, and volunteers we work with



and who help us accomplish so much. Their passion is truly inspirational! This year, we especially missed working side by side with many of our volunteers, but we appreciate those who were able to help us move projects forward.

Next year, we look forward to building on our progress—in the field and behind the scenes. We anticipate more preserve workdays and events, updates to our preserve management plans, and new volunteer opportunities.



## APPRECIATION

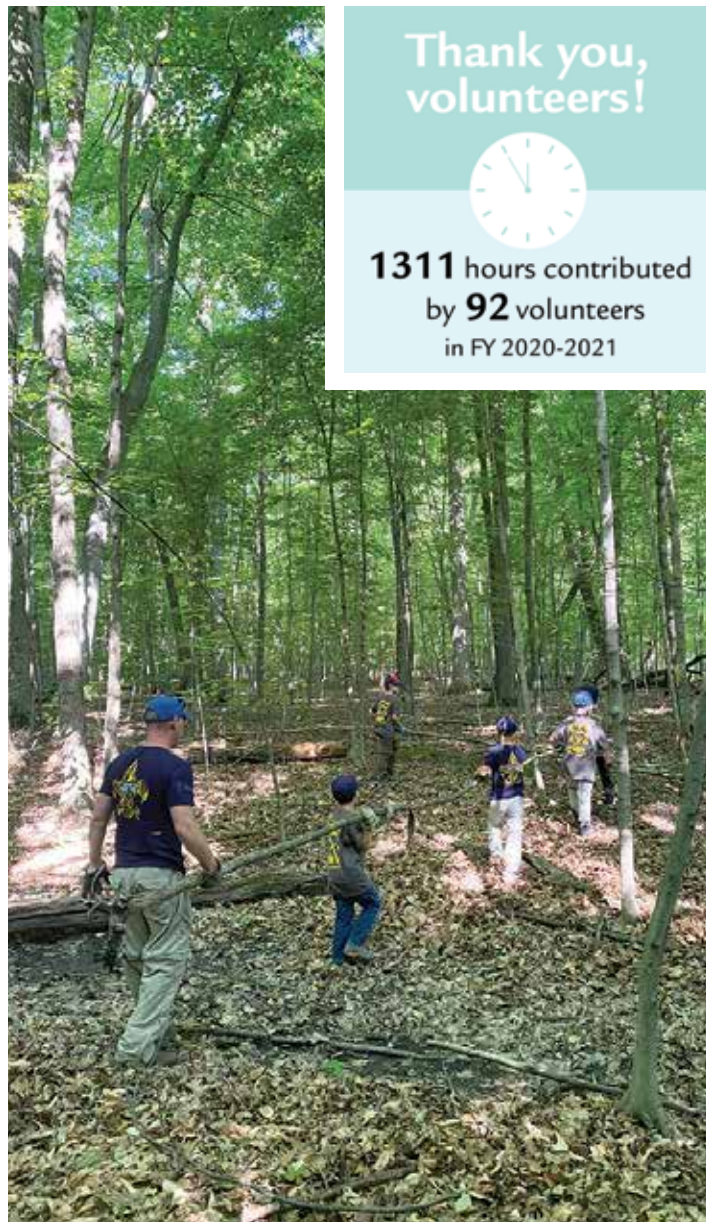
Our volunteers are wonderful! We can't say it enough. Our work would not be possible without their generosity. Legacy would like to give special thanks to all the volunteers who gifted their time and talents, especially this past year. Even though we had fewer volunteer opportunities and for the ones we did have, there were added layers of difficulty (think masks, social distancing, lots of hand sanitizer, no tool sharing, and temperature checks!), our dedicated volunteers rose to the occasion.

With the addition of their 1,311 volunteer hours in 2020-2021, Legacy's volunteer program has officially recorded over 35,400 total hours!

Thank you to all Legacy volunteers who improve our public preserves, monitor our easement properties, give us legal advice, provide us with secure governance, and keep our administrative procedures running smoothly!



*Eastern Michigan University students remove common buckthorn from the woodland at Lloyd and Mabel Johnson Preserve.*



*Cub Scout Pack 293 cleans up trails at Creekshead Preserve*

Thank you,  
volunteers!



**1311** hours contributed  
by **92** volunteers  
in FY 2020-2021

## *A Special Thank You!*

- Attorney **Sandy Sorini Elser** – Thanks for your legal work on three acquisition projects and the numerous Raisin Valley Land Trust easement transfers.
- Eastern Michigan University professors **Maria Goodrich and Renee Mulcrone** – Thanks for bringing out your students to help cut invasive shrubs at Johnson Preserve.
- Photographer **John Metzler** – Thanks for your amazing photographs, for leading a hike for us, and for helping keep our trails clear!
- Plymouth **Cub Scout Pack 293** – Thanks for helping us clean up the trails at Creekshead Preserve.



*Volunteer Sandy Sorini Elser and Executive Director Diana Kern at a land closing.*



# 2020-2021 Legacy Volunteers

James Adams  
Liam Beaumont  
Neal Billetdeaux\*  
Rosanne Bloomer  
Meghan Bonfiglio  
George Borel  
Terry Brinkman  
Michelle Brosius\*  
John Chamberlin\*  
Jessica Chesney  
Peggy Cole  
Peter DeLoof  
Matt Demmon  
Suzanne DeVine  
Larry Doll  
John Dryden\*  
Thomas Chettleburgh\*  
Margaret Engle  
Tania Evans\*  
Taiki Fukuda  
Ryan Gardner  
Steven Gilzow\*  
Anne Glendon  
Paul Glendon

Maria Goodrich and her EMU students  
Christopher Graham  
Elaine Graham  
Jacqui Grisdale\*  
Benjamin Haidar  
Joan Hellmann\*  
Joseph Hierman  
Thomas Hierman  
Noah Israel\*  
Everett Jankowski  
Julian Jankowski  
Jennifer Kangas  
Susan Lackey  
Ginny Leikam  
John Lloyd\*  
Henry Lowery  
James McCauley\*  
John Metzler  
John Moran  
Isaac Mueller  
Renee Mulcrone and  
her EMU students  
Gerald Nordblom  
John Owen\*



EMU students get up close with a snake during a workday at Johnson Preserve.  
Photo by Allene Smith



Volunteer John Dryden walks through a soybean field during photomonitoring

Penny Owen\*  
Steve Palms  
David Read  
James Rossman\*  
Anita Sandretto\*  
Peter Sandretto\*  
Dale Sass\*  
Gary Siegrist  
Adam Smith\*  
Marguerite Smith\*  
Sandi Smith  
Sandy Sorini Elser  
Bill Steere\*  
Charity Steere\*  
Arthur Strand  
Gavin Strand  
Leo Strand  
Scott Strodman  
William Strohaber  
Catherine Susan\*  
Laura Tridico  
Karen Ufer  
Deborah VandenBroek  
Deborah Weiker\*  
Simon Whitelocke

We try to keep our records up to date,  
but apologize if we have missed anyone.  
Please let us know if your name is missing.

\*photomonitor

## APPRECIATION

When we started thinking about what Legacy's 50th anniversary year would look like, we dreamt of connection, laughter, and sharing our love of land with everyone. Especially with those who made our first 50 years possible. What we didn't dream of was a pandemic! Thankfully though, through the support of dedicated staff, board, volunteers, partners, and donors, what was initially seen as a challenge, became a wonderful opportunity. We sincerely appreciate the generosity of our supporters throughout the last 50 years, and particularly this year. **THANK YOU!**

*A special thank you to all the donors, sponsors, art auction donors, and volunteers who made our 50th year and virtual gala so memorable!*



### 50th Anniversary Year Sponsors

Anonymous Donor – 50th Anniversary \$50,000 Matching Grant  
Bank of Ann Arbor – Media Sponsor  
Jerry Nordblom & Barbara Michniewicz  
Paul & Anne Glendon

### 50th Gala Cabinet Members

Karen Ufer, Larry Doll, Jerry Nordblom, Jim Adams, Susan Lackey,  
Paul & Anne Glendon, Chris & Elaine Graham

### Sponsors

#### Presenting Sponsor



#### The Candles

Anonymous Donors

#### The Batter

Robbie O'Brien, CWA & Lee Sirvaitis, CFP • Rick Taylor Realty  
Kapnick Insurance • GreenStone Farm Credit Services  
ITC Holdings • Chris & Elaine Graham

#### The Sprinkles

Jim Adams & Naz Edwards • Chelsea State Bank  
Dykema Gossett PLLC • Dennis, Gartland & Niergarth CPA  
Sue Lackey & Steve Daut • Orion Automotive • Yoga Focus

### Art Auction Donors

Marty Walker • Debbie Thompson • Marlene Dusbiber • Susan Craig  
Scott Weaver • Deva Designs • Lisa Boerema • Bent Tree Flute Circle  
Susie Stevenson • Robyn Mendenhall • Old Brick Farm • Bur Oaks Farm  
Holland Bowl Mill • Motawi Tile



# Thank you for your support!

The following list includes gifts received in fiscal year, July 1, 2020 to June 30, 2021. If you believe we have made an error, please contact Krista Jacob at 734-302-5263 or [kjacob@legacylandconservancy.org](mailto:kjacob@legacylandconservancy.org).

## Founders

Anonymous Donors (6)  
Absolute Title  
The Carls Foundation  
Larry and Stephanie Doll  
The Harry A. and Margaret D. Towsley Foundation  
J. Ferrantino Charitable Foundation  
Emile Lauzzana  
Michigan Department of Environmental Quality (DEQ)  
Marguerite Smith  
Washtenaw County Parks & Recreation Commission (WCPARC)

## Partners

Ann Arbor Area Community Foundation  
Bank of Ann Arbor  
Michael Boehnke and Betsy Foxman  
Cherry Republic, Inc.  
Paul and Anne Glendon  
ITC Holdings  
Carol Kauffman  
Martin Family Foundation  
Thomas and Debby McMullen  
Speckhard-Knight Charitable Foundation  
Charity and Bill Steere  
Ann Surratt  
United States Department of Agriculture (USDA) - Natural Resources Conservation Service

## Benefactors

Anonymous Donors (3)  
C.S. Mott Foundation  
Suzanne DeVine and John Koselka  
Facebook Payments, Inc.  
Judith Heady  
Scott and Frankie Simonds  
David and Karen Ufer

## Conservators

Anonymous Donors (2)  
Diane Arnold  
Neal and Laura Billetdeaux  
Susan Blake  
Tom and Rosanne Bloomer  
George and Judy Borel  
Martha and Steven Ceccio  
Peter H. DeLoof and Sara A. Bassett  
Mary H. Dobson  
Steve and Judy Dobson  
Wendell and Nancy Dunbar

Margaret Engle and Gavin Clabaugh  
Michael Fitzsimmons and Hope Haefner  
Carol Gagliardi and David Flesher  
Christopher and Elaine Graham  
GreenStone Farm Credit Services -

Ann Arbor Branch  
Kapnick Insurance  
Mary Kern  
Lew Kidder  
Susan Lackey and Steve Daut  
Land Trust Alliance - Midwest Program  
David and Louise Lutton  
Ann Meredith  
Tim and Anne Merkel  
Sharon Morioka  
Mosaic Foundation  
Gerald Nordblom and  
Barbara Michniewicz†  
Arthur Nusbaum  
Wade and Carol Peacock  
Antoinette Pilzner and Daniel Moons  
Rick Powell and Rita Ayyangar  
James Reichert  
William and Karen Reichert

Jim and Pam Rossman  
Dale Sass and Idelle Hammond-Sass  
Robbie O'Brien, CWA & Lee Sirvaitis, CFP  
Deborah and William Strohaver  
Bill and Marlene Thomas  
United States Department of Agriculture (USDA) - Farm Service Agency  
Ruth Vail  
Deborah and Chris VandenBroek

## Sustainers

Anonymous Donors (2)  
James Adams and Naz Edwards  
Ann Agler  
Deaver Armstrong  
Catherine E. Badgley and Gerald Smith  
Chelsea State Bank  
Charlie and Janet Crone  
Dennis, Gartland & Niergarth  
Arun and Jennifer D'Souza  
Dykema Gossett PLLC  
EarthShare of Michigan  
Tania Evans and James Fajen  
Esther Floyd



Frank W. Lynch & Roberta Jane Lynch  
 Endowed Family Fund  
 Steven Glauberman and  
 Margaret Schankler  
 Bob and Jane Grover  
 Talbot and Jan Hack  
 Yoshiko Hamano  
 Craig Harvey  
 Gregg and Judy Heidebrink  
 Robert and Cynthia Helber  
 Maurita Peterson Holland  
 Kent and Mary Johnson  
 Brad and Lisa Judge  
 Diana Kern  
 Klave's Marina  
 Susan Kornfield  
 Frances and Campbell Laird  
 Land Trust Alliance - National  
 John Lloyd and Sue Budin  
 Bob Martel and Lisa Sessa  
 Edith (Teddy) Maynard  
 Martha Mayo  
 James and Denise McCauley  
 Patrick and Carolyn McNamara  
 Montague Foundation  
 Jo Ann and Gary Munce  
 Mim and Dan Munzel  
 Andrew Muth and Patricia Saad  
 Kristen and Christopher Nyht  
 Peter and Alicia Olin  
 Orion Automotive Services  
 Steve and Betty Palms  
 Jim and Nancy Paul  
 Adela Pinch

Dr. Richard and Laurie Prager  
 Rick Taylor Real Estate  
 Bill and Jane Sass  
 Elvera Shappirio  
 Mark Skowronski  
 Adam and Theresa Smith  
 SmithGroup JJR  
 Timothy Sochocki  
 Doug Elser and Sandy Sorini Elser  
 Toni and Ken Spears  
 Peri Stone-Palmquist  
 Arlene Taylor and Matt Laux  
 Anna Wadhams  
 Arthur and Renata Wasserman  
 Yoga Focus

#### Champions

Anonymous Donors (2)  
 Karen Adams  
 Devon and Dharma Akmon  
 Michael and Suzan Alexander  
 Mike and Kathleen Dul Aznavorian  
 Molly Bachelor  
 John Bassett  
 Carol Beck  
 Victor Bocalon  
 David and Sharon Brooks  
 Scott and Wendy Broshar  
 Patrick Burgett  
 Dennis and Janice Burke  
 Mary Caldwell  
 Evan Caplis  
 Gerald Clark and Shutta Crum  
 Bill and Joyce Connett

Martha Coscina  
 Clark Davis  
 Dempsey Inc  
 Norma and Scott Dentler  
 Donald Doll  
 Steve and Janine Easter  
 Reno and Nancy Feldkamp  
 Bernard Friedman  
 Julie Frost  
 Paul Gambka  
 Carola Gerigk  
 Bruce and Sara Gibb  
 Thomas and Ann Gladwin  
 Norma and Daniel Green  
 Joan Harris and Ed Sarath  
 Norman and Deborah Herbert  
 William Holmes  
 Erika Homann and Michael Wellman  
 Jennifer R. Poteat Fund of the AAACF  
 Richard Kato  
 Kristine and Donn Kipka  
 Sandra and Alan Kortesoja  
 Marian and Paul Laughlin  
 Ginny Leikam  
 Evan LeRoy  
 Chip and Kathleen Letts  
 Linda Lombardini and Sandi Smith  
 Joan and Michael Martin  
 Mary Matthews  
 Richard and Ann Mary McCarthy  
 James McIntosh and Elaine Gazda  
 John and Sheri McLelland  
 John Metzler  
 Susan Millar  
 David Mindell and Jennifer Gager  
 Marc and Emily Olson  
 Joe O'Neal and Karen Koykka O'Neal  
 Jeffrey and Joanna Post  
 Joanne Rau  
 Pary Reza  
 John Rogers  
 Mack Ruffin and Kathy Carter  
 Peter and Anita Sandretto  
 Jane Schmiedeke  
 Kenneth Shaw  
 Nancy Shiffler  
 Clark and Amy Shuler  
 Martha S. Weintraub and Peter D. Smith  
 Family Fund  
 Eugene Su and Christin Carter-Su  
 Erika Taylor  
 Carolye Towers  
 Herbert and Anne Upton  
 Byron and Corinne Vivian  
 Waterloo Hunt Club  
 Waytes Family Charitable Fund  
 Bill and Marlene Wenk



Woodpecker - Photo by Patricia Sauer



## Friends

Anonymous Donors (9)  
 Jim and Jan Albers  
 AmazonSmile Foundation  
 Ameriprise Financial, Inc  
 Carl and Janice Bach  
 John and Erin Bardsley  
 Margaret Bignall and Paul Hossler  
 Lenore Blum  
 Meghan and Carl Bonfiglio  
 William Brinkerhoff and Kathy Sample  
 Cindy Browne  
 Gary and Shelley Bruder  
 Carol Buatti  
 Laurence and Sheryl Burgess  
 Margaret Caplis  
 David Cardwell  
 John and Marsha Chamberlin  
 Sue and Richard Chase  
 Latham and Kathryn Claflin  
 Robert Cohen and Ruth Moscow-Cohen  
 John Copley and Janice Berry  
 George and Elizabeth Daubner  
 Lauren Dawn  
 Susan Dehncke  
 Tom and Margaret Demmon  
 Carolin and Macdonald Dick  
 David Dickinson and Jeannine LaPrad  
 Mac Dobson  
 Brenda Donaldson  
 Amy Donoghue  
 Cary and Suzy Engleberg  
 David and Jill Esau  
 Jennifer Fike and Jon Cioffi  
 Carol Fletcher  
 Betsy Foote and Tom Gebhardt  
 David Foster and Catherine Kamil  
 Mr and Mrs Karl Frankena  
 Tom and Catherine Freeman  
 Otto and Lourdes Gago  
 Gerald Gardner  
 Anne Gardner Remley  
 Beth Glover Reed  
 Richard Grant  
 Dunrie Greiling and David Higbie  
 Bob and Susan Grese  
 Jacqui Grisdale  
 Mark Haddox  
 Bart and Maribeth Hammer  
 John Hand  
 Carolyn Hastings  
 Stephen Hastings  
 Suzie and Bob Heiney  
 Glenn Hendrix  
 Peter Hinman  
 Kay Holsinger and Douglas Wood  
 Kenneth and Carol Hovey  
 Joel D. Howell  
 Gary and Kathleen Huffnagle



Photo by John Lloyd

*"Photo monitoring for many years has increased my appreciation for the depth and diversity of nature in Southeast Michigan. I never know what wonder each visit will reveal, but there's almost always something. It's comforting to know these lands are being preserved. One of my favorite visits was the time nearly all the animals on a farm decided to follow us, making my monitoring partner appear to be the pied piper." ~John Lloyd, Legacy volunteer*

Sheila Irving and Gary Laderach  
 Joe and Jude Jarecki  
 Angela Johnson  
 Kathleen Johnson  
 Willard Johnson  
 Amanda Kachur and Doug Wathen  
 Peter and Carol Kappus  
 Erika and Ralph Keith  
 Rich and Suzanne Kisler  
 Christy Klim  
 J. David Kluck  
 William Knapp  
 Ron and Rosalie Koenig  
 Sybil Kolon and Maan Abdulbaki  
 Julia Kothe  
 John and Kathy Kotre  
 Michael Kruzich  
 Linda Lamoreaux  
 Maris Laporter  
 Theodore and Wendy Lawrence  
 Sheldon and Mary Levy  
 Cheryl and John Lipan  
 Roberta and Gary Ludtke  
 Dave and Sarah Lynch  
 Mary Mahony and Paul Smith  
 Dan McAskin  
 John McCauley and Virginia Weingate  
 Griff and Pat McDonald  
 Margot and Tom Mehringer  
 Harvey Michaels and Gloria Helfand

Piotr Michalowski  
 Beatrice Miller  
 Kyler Moran  
 Sue Morley  
 Morley Family Foundation  
 Thomas and Gail Mroz  
 Stephen Musko and Sarah Hess Musko  
 David Myer  
 Elizabeth Ong  
 Mike and Kathy O'Rear  
 Penny and John Owen  
 Linda Palmer  
 Dianne Patrick and Mark Mitchell  
 John and Mary Pedley  
 Maggie Phillips  
 Whitney and Christine Prince  
 Prudential  
 Ellen and Stephen Ramsburgh  
 Timothy and Patricia Redmond  
 Mary Relson  
 Pat and John Reynolds  
 Richard and Linda Ridley  
 David and Patricia Rogers  
 Jillian Rosen  
 Glen and Marge Rutila  
 Kathryn Sargeant, Thomas E. Chettleburgh  
 and William Chettleburgh  
 Dick and Norma Sarns  
 Paul and Mildred Scholl  
 Jeanie and Robert Schultz

Amy and David Schulz  
 Richard and Janet Schwarze  
 Bill Secrest and Misty Callies  
 Michael and Joanna Semanske  
 Anthony and Elizabeth Sensoli  
 Miriam Beth Shaw  
 Jean and Thomas Shope  
 Robert Silbergleit and Catherine Zudak  
 Michael Simon and Wendy Uhlmann  
 Steven Slack and Patricia Joyce  
 Katie Slicker  
 Ronald and Julie Smith  
 Betty and Warren Smith  
 Edwin and Shirley Smith  
 Gary Stelzer and Nancy Frushour  
 Paul and Eulalia Stewart  
 Sally A. and Jeffrey P. Stommen  
 Rebecca Swank  
 James Szocik and Karin Tice  
 Brian and Lee Talbot  
 Thomas and Nancy Taylor  
 Linden and Stephen Thoburn  
 Kathleen Timberlake  
 Eric and Franziska van der Schalie  
 Kristin and Willem Van Reesema  
 Martin Walsh and Margarete Orlik-Walsh  
 Rocky and Judy Ward  
 Joan and Will Weber  
 Bill and Susan Weber  
 Marlene and Alan Weintraub  
 James and Kathleen Welch  
 Helen Welford and Robin Warner  
 Cherry and Kenneth Westerman  
 Susan and Peter Westerman  
 Simon and Anu Whitelocke  
 Jean Wineman  
 Charlotte Wolfe  
 Roger Wykes  
 Carl and Laura Zang

Carol Chase and Scott Hadley  
 Kathleen Clement  
 Victor Clore  
 Tacy Cobb  
 Alan and Polly Connor  
 Susan and Patrick Cooley  
 Dennis Cooperson  
 Marilyn Couture  
 Thomas Longworth and Carol Cramer  
 Mark Delaney  
 Patricia Dieter  
 Timothy Donahue and Melisa Schuster  
 Judy Eddy and Marilou Suarez  
 Morgan and Sally Edwards  
 Eric Engel  
 Don and Gwen Evich  
 Dan and Tina Ezekiel  
 Carolyn Ferrell and Lorin Burgess  
 Peter and Patricia Fink  
 Dennis Finseth  
 Marylouise Fischbach  
 James Fish  
 Gregg and Brenda Franz  
 Marija Ruta Freeland  
 Jason Frenzel  
 Michele Friss  
 Madelyn Gaharan-Geisz  
 Ron Gamble and Faye Stoner  
 Earl Goddin and Catherine Riseng  
 Laurence and Nancy Jo Goldstein  
 Helen and Edward F Greene  
 Amy Griffith  
 Fred and Iris Gruhl  
 Georgette and Keith Hansen  
 Brett and Lynn Harris  
 Susan Hartman and Stuart Cohen

Deborah Hartsuff  
 Esther Heitler  
 Henrietta Conservation and  
 Recreation Conservancy  
 Dave Heritier  
 Walter Hogan  
 Peggie Hollingsworth  
 Rebecca Horvath  
 Douglas Jacob  
 Carrie Jacob  
 Anthony Joseph and  
 Kathleen Albrecht Joseph  
 Ted Julvezan  
 Harvey Juster  
 Rachel and Stephen Kaplan  
 Sylvia Kay  
 Sally Kennedy  
 Deborah Kern  
 Laura Khailany  
 Gloria King  
 Katherine King  
 Pam Knickerbocker  
 Mickey Kress  
 Martha Krieg  
 Faith and Ralph Krug  
 Norma Kumbier  
 Anita Lamour  
 Leslie and Dennis Lampron  
 Linore Latham  
 John and Linda Leatham  
 Dorothy Lieffers  
 Doris Lindsay  
 Barbara Major  
 Daniel and Kay Maloney  
 Robert W. and Judith Marans  
 Jo Mayer and Paul Crandall

### Supporters

Anonymous Donors (7)  
 Terry Adams and Barbara Lamar  
 The Adox Family  
 Lois and Dane Alexander  
 Cathy Bach and Brian Hazlett  
 Nancy and Victoria Bacyinski  
 Brenda Baker  
 Michele Baxter  
 Ernie Becker and Cindy Zuccaro  
 Maureen Becker  
 Thomas Bejma  
 Pam Bierzynski and Timothy McGahey  
 Elizabeth Bishop  
 Marcia and Donald Bracciano  
 Dorothy Brooks  
 Nancy Brucken  
 Albert and Barbara Cain  
 John Carson



Great blue heron - Photo by John Lloyd





Reichert Preserve - Photo by Harvey Michaels

*"I love the Reichert Preserve, I live in the area and have met some of the caretakers who have watched over this preserve for years before it was a preserve. Amazing area! It is very peaceful and beautiful there. Happy Birthday Legacy Land Conservancy! ~Susan F., Legacy supporter*

Carol Mayer  
Dria McCauley  
Cathryn and Ronald McCready  
Jonathan McDonald  
Jill McDonough and Greg Merriman  
Michael and Karen McMahon  
Dennis and Carole McNamara  
John and Ashley Moran  
Suzy Morse  
Glenn Muhr  
Alison Neff  
Network For Good  
David and Jeanne Neuhoff  
Chuck Nicewonder  
Camie Noah  
Larry and Sarah Nooden  
Darrin O'Brien and Julie Craves  
Gregg and Cathy Ottaviani  
Andrew Overmire and Stephanie Buttrey  
Shannon Owsinski  
Cyndi Paddock  
Jeannine Palms and Dale Petty  
Lois and Gregory Paquette  
Walter Parry  
Beth Louise Green Peace  
Pfizer Foundation  
Eunice Phillips  
Elaine and Bertram Pitt  
Thomas Porter  
Philip and Kathleen Power  
Michaline Prais  
Terry Ragland  
Gale Redding

David Rein  
Susan Reinhart  
Clark Richardson  
Ruth Riegel  
Megan Rodgers and Julie Crichton  
Deborah Salerno  
Maxwell Sanborn  
Robert and Kathleen Savit  
William and Mary Ann Schwartz  
Julie Seagraves  
Kathee Shatter  
Clifford and Ingrid Sheldon  
Gary and Nancy Siegrist  
Robert Sigler  
John St. John  
Julie Stachecki  
Cynthia Stewart  
Carol Strahler  
Frank and Evelyn Stukenborg  
Michael Townley  
Scott Trowbridge and Jean Holther  
Suzanne Van Appledorn  
Marcia Van Fossen and Woody London  
Tom and Alice Van Zoeren  
Bill Vargo  
Stewart Vining  
Rhonda Weathers  
Kurt Weber  
Ed and Corazon Yee  
John and Cynthia Young  
Julie Young  
Lara Zarewych  
Frank and Lauren Zinn

### Carls Challenge

Anonymous Donor  
Larry and Stephanie Doll  
ITC Holdings  
Mary Kern†

### Emerald Arc Campaign Fund

Larry and Stephanie Doll  
Dale Sass and Idelle Hammond-Sass

### Farmland Fund

Anonymous Donor  
Ann Arbor Area Community Foundation  
Evan Caplis  
Bill and Joyce Connett  
Gerald Gardner  
Sheila Irving and Gary Laderach  
Kent and Mary Johnson  
Michael Kruzich  
Tim and Anne Merkel  
Peter and Alicia Olin  
Andrew Overmire and Stephanie Buttrey  
Dianne Patrick and Mark Mitchell  
Robert Sigler  
Linden and Stephen Thoburn  
Kathleen Timberlake

### Fresh Waters Fund

Anonymous Donor  
Cary and Suzy Engleberg

### Reichert Preserve Fund

Tacy Cobb  
Marylouise Fischbach  
John and Linda Leatham  
Dorothy Liefers  
Doris Lindsay  
Carol Mayer  
Camie Noah



Mushrooms at Creekshead Preserve  
Photo by Dani Wyman

Gale Redding  
William and Karen Reichert  
Kurt Weber

#### Public Recreation/Waterloo Fund

Latham and Kathryn Claflin  
Henrietta Conservation and  
Recreation Conservancy  
Angela Johnson  
Cathryn and Ronald McCready  
Shannon Owsinski  
Charity and Bill Steere  
James Szocik and Karin Tice  
Arlene Taylor and Matt Laux  
Waterloo Hunt Club

#### Stewardship Fund

Anonymous Donor (2)  
Mike and Kathleen Dul Aznavorian

Alan and Polly Connor  
Dennis Cooperson  
Morgan and Sally Edwards  
Jacqui Grisdale  
Sandra and Alan Kortesoja  
Roberta and Gary Ludtke  
Edith (Teddy) Maynard  
David Mindell and Jennifer Gager  
Darrin O'Brien and Julie Craves  
Peri Stone-Palmquist  
Michaline Prais  
Prudential  
Timothy and Patricia Redmond  
Maxwell Sanborn  
Julie Seagraves  
Marguerite Smith  
Byron and Corinne Vivian

#### In-Kind Donors

Bent Tree Flute Circle  
Lisa Boerema  
Bur Oaks Farm  
Deva Designs  
Larry and Stephanie Doll  
Marlene Dusbiber  
Graham Graphics, LLC  
Holland Bowl Mill  
Robyn Mendenhall  
Michigan Wildflower Farm  
Motawi Tileworks  
Stephenson Ceramics  
Sue Craig Fine Art  
Debbie Thompson  
David and Karen Ufer  
Marty Walker  
Waterloo Hunt Club  
Weaver Tile



Alex, Allene, and Nathan complete chainsaw training.

*"Thank you, Legacy Land Conservancy, for all the wonderful conservation and preservation work you do. And thank you especially for providing opportunities for students to learn land management techniques. I look back fondly on the summer I interned with our small but mighty team (shout-out to Allene and Nathan!). I actively use the knowledge I gained that summer to inform my work now as an ecological restoration designer and scientist. Looking forward to following the next seven decades of your work." ~Alex Peters, 2016 Stewardship Crew member*

*Thank you to those who have made workplace-giving pledges or gifts through the United Way of Washtenaw County, Earthshare of Michigan, and Benevity Community Impact Fund.*

Ameriprise Financial, Inc.  
Steve and Judy Dobson  
Michael Fitzsimmons and Hope Haefner  
Roberta and Gary Ludtke  
Dan McAskin  
Griff and Pat McDonald  
Tom and Debby McMullen  
Patrick and Carolyn McNamara  
Prudential

*Thank you to those who documented new multi-year pledges between July 1, 2020 and June 30, 2021. Commitments of this nature allow Legacy an increased stability to sustainably plan and carry out work that takes years to execute, and lasts forever.*

Doug Elser and Sandy Sorini Elser  
John Lloyd and Sue Budin  
Maureen Martin and Mike Penskar



# Memorial and Honorary Gifts

**In Memory of John Morgan Allen**  
Edith (Teddy) Maynard

**In Memory of Paul Brencher**  
Mickey Kress

**In Memory of Peter MacLaurin Dobson**  
Mac Dobson

**In Memory of Margaret Gram**  
Marian and Paul Laughlin

**In Memory of James E Hoffman**  
Jean and Thomas Shope

**In Memory of Lulu Johnson**  
Kent and Mary Johnson

**In Memory of Mary Kern**  
Anonymous Donor  
Ann Agler  
Lois and Dane Alexander  
Nancy and Victoria Bacyinski  
Suzanne DeVine and John Koselka  
Judy Eddy and Marilou Suarez  
Pam Knickerbocker  
Alison Neff  
Megan Rodgers and Julie Crichton  
Charity and Bill Steere  
Erika Taylor

**In Memory of Rork Kuick**  
Anonymous Donor

**In Memory of Opa (Bert Marshall)**  
Douglas Jacob

**In Memory of Donna Rayer**  
Lois and Gregory Paquette

**In Memory of Rudy and Sue Reichert**  
Brian and Lee Talbot

**In Memory of Emily Elizabeth Smith**  
Julie Seagraves

**In Memory of Roscoe Sherwin Thoburn**  
Linden and Stephen Thoburn

**In Memory of**  
**Jan Willem Niklaas Zuidveld**  
Michele Baxter  
Maureen Becker  
Evan Caplis  
Margaret Caplis  
Kathleen Clement  
Tacy Cobb  
Marylouise Fischbach  
Michele Friss  
John and Linda Leatham  
Dorothy Lieffers  
Doris Lindsay  
Carol Mayer  
Tim and Anne Merkel  
Camie Noah  
Gale Redding  
Bill and Jane Sass

**In Honor of Ben Caldwell's birthday**  
Mary Caldwell

**In Honor of Albert Gallup**  
Tom and Alice Van Zoeren

**In Honor of John, Patrick, and Robyn McCarry**  
Dianne Patrick and Mark Mitchell

**In Honor of Clair and Linda Risner**  
Cyndi Paddock

**In Honor of Peter and Anita Sandretto**  
Anonymous Donor

**In Honor of Dick and Norma Sarns**  
Dr. Richard and Laurie Prager

**In Honor of Dale S. Sass**  
Katie Slicker

**In Honor and In Memory of Anthony and Rose Shatter**  
Devon and Dharma Akmon  
Kathee Shatter

**In Honor of Jim Sigler**  
Robert Sigler

**In Honor of Adam Smith**  
Martha Coscina

**In Honor of John M. Swales**  
Anonymous Donor

**In Honor of Dana Wright**  
Marguerite Smith

## Legacy Society

Our Legacy Society recognizes those whose values will be immortalized through a planned gift – a will, bequest, trust, annuity, insurance, or deferred gift – in support of Legacy's ongoing land protection mission. We are extremely grateful for the following Legacy Society members whose generosity will continue to make a difference for land conservation far into the future. ‡deceased

Anonymous (3)  
Elizabeth S. Bishop  
Susan J. Blake  
Larry & Stephanie Doll  
Diane L. Dupuis  
Paul and Anne Glendon  
John S. Hand, PhD  
Judith Heady  
Sybil Kolon and Maan Abdulbaki

Susan Lackey and Steve Daut  
Lois McHenry  
Thomas and Deborah McMullen  
Margot K. Mehringer  
Jerry Nordblom and  
Barbara Michniewicz‡  
Margaret M. Phillips  
Bill and Charity Steere  
Ann Surratt

**Emeritus**  
Anonymous  
Myrna Berlet‡  
Dale Crayne‡  
Mary DuBois‡  
John Fyfe‡  
Dr. Rudy Reichert‡  
Constance Rinehart  
Phil Surratt‡  
Bruce Watkins‡

As we reflect upon our 50th year, Legacy is proud of our achievements and grateful for the hard work and dedication of so many who have brought us to this moment. Our success is the result of a collective belief that protecting and preserving land is a responsibility we all share.

## *We've accomplished a lot in 50 years!*

- ✓ Protected nearly 10,000 acres of land in the greater Washtenaw and Jackson areas
- ✓ Worked with 71 landowners to protect over 3,900 acres via conservation easements
- ✓ Protected 320 acres as public nature preserves that include over 9.5 miles of trails
- ✓ Completed 48 projects with partners resulting in 5,288 acres protected
- ✓ Worked with 742 volunteers who recorded more than 34,500 volunteer hours



**LEGACY**  
Land Conservancy

*Celebrating 50 Years of Protecting  
& Preserving Land*

#### CONTACT

734-302-5263

[info@legacylandconservancy.org](mailto:info@legacylandconservancy.org)

[legacylandconservancy.org](http://legacylandconservancy.org)



#### STAFF

**Ann Agler**, Office Manager | **Pam Bierzynski**, Donor Stewardship & Communications Manager | **Mario Garza**, Business Manager

**Krista Jacob**, Development Associate | **Diana Kern**, Executive Director | **Susan LaCroix**, Land Protection Manager

**Clint McGill**, Easement Stewardship Coordinator | **Kyler Moran**, Preserve Stewardship Manager | **Allene Smith**, Land Protection Specialist

**Erika Taylor**, Finance & Operations Director | **Cayla Tinney** and **Shawn Zellers**, Reichert Preserve Caretakers

#### TRUSTEES

**Larry Doll**, President | **Ginny Leikam**, Vice President | **George Borel**, Treasurer | **Karen Ufer**, Secretary

**Neal Billedeaux** | **John Moran** | **Jerry Nordblom** | **Dale Sass** | **Charity Steere** | **Bill Strohaber** | **Simon Whitelocke**

**On the cover:** top left Bird Hills Nature Park by John Metzler; top right Conservation Easement in Dexter;  
bottom left Community Farm of Ann Arbor by Kristin Van Vliet; bottom right Buesser Conservation Easement in Washtenaw County

© 2022