

"I used to think about what the land will look like in 25 years. Now, it's a whole new perspective. I'm thinking more of what it will look like in 100 years."

—Jerry Nordblom



Barbara Michniewicz and Jerry Nordblom protected 25 acres in Washtenaw County. They enjoy watching wildlife on their land, including these adorable fox kits.



Barbara Michniewicz



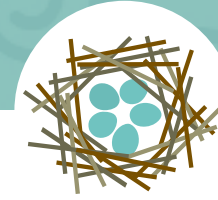
Contact Us

Legacy Land Conservancy

1100 N Main St, Suite 203
Ann Arbor, MI 48104

protect@legacylandconservancy.org
734-302-5263

legacylandconservancy.org



Margot Mehringer

Protecting Your Land

with

Legacy Land Conservancy

"This is the greatest feeling I've ever had: to save the land so that future generations can enjoy the beauty."

—Carolyn Streiter



A peaceful view of the River Raisin on a property Legacy protects

Why protect your land?

Hundreds of people have worked with us to protect their land. You might recognize some of these common motivations:

- Protect what you love for future generations.
- Preserve what makes southern Michigan a great place to live: beautiful scenery, clean air and water, rural heritage, and places to enjoy the outdoors.
- Promote a healthy environment, including water quality; undeveloped land filters pollutants before they can reach waterways.
- Invest in your family; protecting land can provide tax benefits, enabling family farmers to reinvest in their business, for instance.

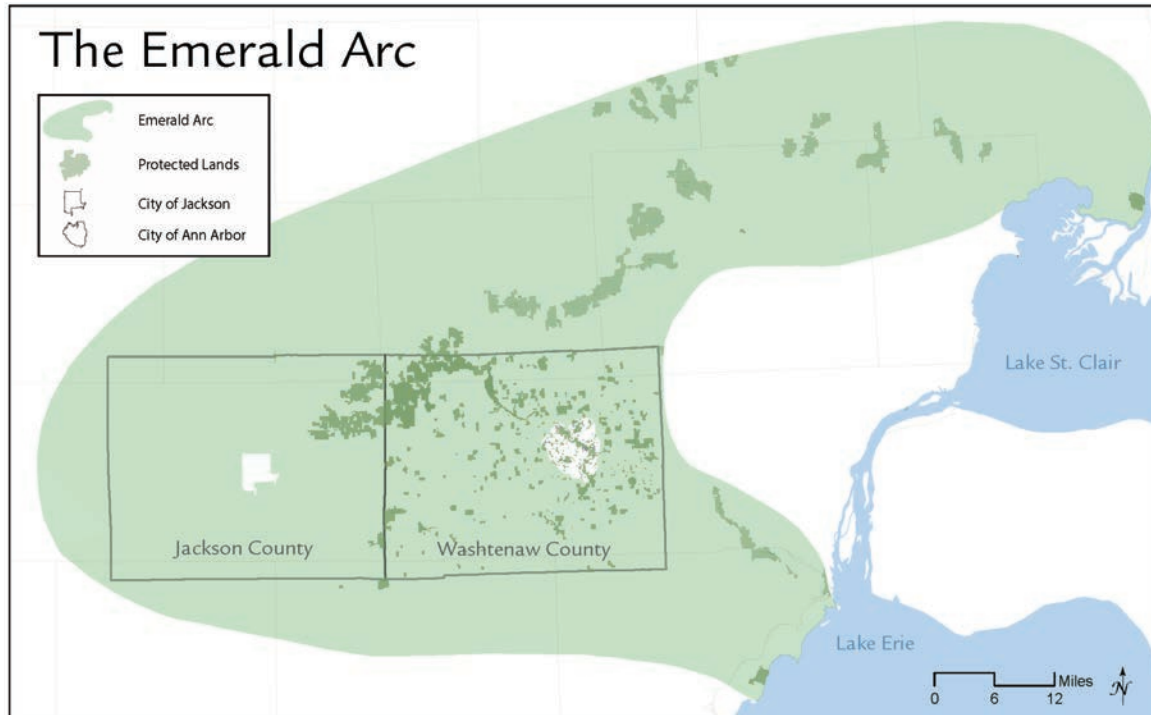
Do any of these reasons resonate with you? If so, consider protecting your land!

How Legacy Land Conservancy can help

Legacy helps private landowners protect their land—*forever*. There are three primary ways:

- Conservation agreement (“conservation easement”): A permanent contract that protects land while maintaining its private ownership. You can live on it, work it, sell it, or pass it on. The agreement runs with the land, and our job is to uphold the terms.
- We can assist with protection of the land by another entity, such as county or state recreation departments.
- Donation or sale (“fee simple”): We can own land outright and manage it as a nature preserve.

To learn more, contact us for a friendly exploratory conversation.



Legacy Land Conservancy is a nonprofit that protects land in southern Michigan. We are practical and non-political. As a nationally accredited land trust, we will uphold our promises to protect land permanently. Our conservation priorities are farmland, fresh water, and places to play. The work of our professional staff is made possible by donors, grants, and volunteers.

The Emerald Arc is Legacy's vision to protect 25,000 acres of land in Jackson and Washtenaw counties. If you decide to protect your land, you can take pride in knowing that it contributes to this arc of green that benefits local communities, now and into the future.

