

LEGACY

Land Conservancy Journal

A publication of Legacy Land Conservancy • Volume 10 • Number 3 • Autumn 2011 • **ANNUAL REPORT**



Southern Michigan's Wild Places

By Susan Lackey, Executive Director

This is the second in a series of articles on Legacy Land Conservancy's high priority areas – the 'most important land' that form the core of the 25,000 acres Legacy intends to protect for people to enjoy in 100 years.

It reads like a series of trivia questions on a coffee shop placemat: Where is the largest block of publicly owned land in southern Michigan? What state park has the largest collection of rare and endangered plants and animals? What Michigan land feature is globally significant and rarer than the rainforests?

The answer to all these questions lies within the arc of public lands known as the Waterloo-Pinckney-Sharonville area. These three parks total over 30,000 acres, and are part of a larger natural feature that begins at Hayes State Park in Lenawee County and runs north through Oakland

County to the Saginaw Bay. This natural feature, left by the last glaciers, is known as the "Jackson Interlobate" and contains some of the last known instances of oak savannas, a now nearly extinct habitat that once covered much of southern Michigan. The Washtenaw and Jackson county portions of this rare place make up one of Legacy's priority places for land protection.

Over the past five years, Legacy has worked closely with the Michigan Department of Natural Resources to identify the properties that are most critical to maintaining the integrity of this landscape.

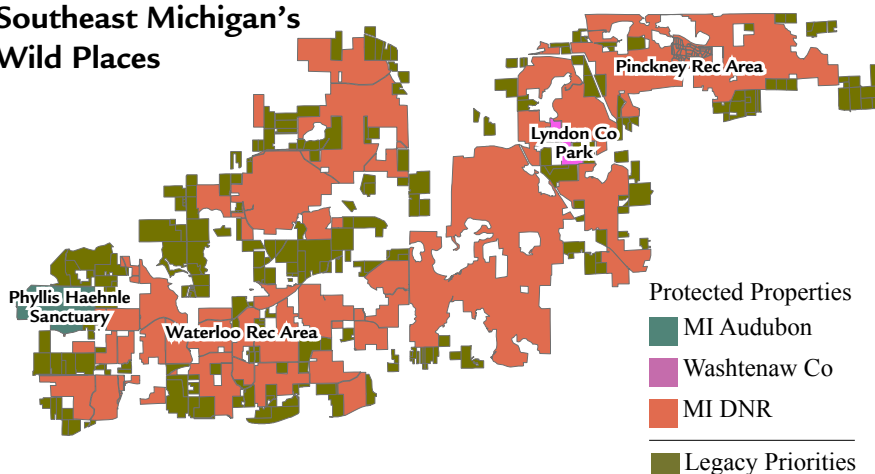
continued on page 2



Inside

Southern Michigan's Wild Places	1
Far Country	2
Upcoming Events	3
Across the Board	3
40th Anniversary Year in Review	4
STAND in the Place Where You Live	4
Financial Report 2010-2011	5
New Lands Protected in 2010-11....	6-7
Thank You!	8-11

Southeast Michigan's Wild Places



Far Country



By Susan Lackey
Executive Director

I've spent a lot of time this year thinking about legacy with a small 'l'...the legacy we are leaving to our community.

'We' in this instance is all of us: donors, staff, board members, volunteers, and the generous landowners who have sometimes protected land at great cost to themselves and their families. It takes all of us to do the hard work that keeps our community a special place to live.

A lot goes into creating that legacy. Here are some of the things we -all of us - have accomplished this year:

- Dedicated new trails in the Lloyd and Mabel Johnson Preserve, linking this publicly accessible land to Pittsfield Township's Lillie Park trail system.
- With the River Raisin Partnership, kicked off a land protection effort in the headwaters of the River Raisin.
- Began implementation of the Washtenaw County Natural Areas Protection Program's farmland preservation strategy.
- Continued our work with the Huron River Watershed Council, protecting land that has been identified as critical to water quality in that urban watershed.
- Partnered with Dahlem Conservancy to protect a scenic view along Jackson County's popular Falling Water Trail.
- Increased stewardship in our five public-access preserves, including the start of a major restoration and trail re-routing in the Beckwith Preserve.
- Helped Jackson County develop a farmland preservation program to qualify for state funding.

All these actions are designed to make sure that when, 40 years from now, a new generation looks back, they will say of us, "They left a legacy that makes our community a better place."

Thank you for doing your part.

continued from page 1

Over 6000 acres of privately held land is within the park's boundaries, with an additional 7800 acres of 'buffer properties' - those that are not important to the integrity of the parks, but protect against intense development which could change the character of neighboring public lands. The strategy is simple: To acquire land within the park boundaries at

fair market value, and to work with landowners to place conservation easements on buffer properties adjacent to park boundaries. It's a long-term strategy, because it is based entirely on a landowner's voluntary decision to sell or preserve their land.

Over the past five years, seven parcels totaling over 450 acres have been added to the park through this partnership, and the Michigan Natural Resources Trust Fund has appropriated \$2.5 million to allow DNR to move quickly when a landowner decides to sell. Legacy adds value to these acquisitions by funding appraisals and related costs. While these expenses are small, they are important, and often Legacy completes this work more rapidly than state government.

Legacy's work in the Waterloo-Pinckney-Sharonville area is supported by the Jackson Community Foundation, donors to Legacy's Waterloo Fund, and the general support of Legacy donors who love Southeast Michigan's wild places.



Legacy's 100 Year Vision is anchored by an arc of protected land running through Jackson and Washtenaw Counties. This winter the Michigan Natural Resources Trust Fund could bring that vision much closer to reality by funding a Department of Natural Resources acquisition of 2000 acres in Norvell and Manchester Townships. The Michigan DNR requested \$3,000,000 from the Trust Fund to acquire land currently for sale by the Trolz family. The property is a combination of wetlands, waterfowl habitat and farmland. This land would provide a unique opportunity to build a new multi-use recreational area from the ground up in a part of the state readily accessible to Southeast Michigan's 5,000,000 residents.



LEGACY
Land Conservancy

Legacy Land Conservancy

1100 N. Main Street #203, Ann Arbor, MI 48104
(734) 302-5263 · info@legacylandconservancy.org
www.legacylandconservancy.org

Legacy Land Conservancy Board of Trustees

James C. Adams, Robert Aldrich, Rosanne Bloomer, Janet Crone, Margaret Engle, Robert Ewing, Joseph Fazio, Jennifer Fike, Paul Glendon, Robert Helber, Heather Price, Kristin Schleick, Scott Simonds, Adam Smith, Charity Steere, Robert Tetens.

The Legacy Land Conservancy Staff

Susan Cooley, Susan Lackey, Erika Taylor, Anna Wadhams, Dana Wright.



Upcoming Events

Low-tech Tool Maintenance

Saturday, November 5th, 9am-1pm

*Field Operations Building at County Farm Park -
2210 Platt Road, Ann Arbor*

How many times have you exchanged the dull blade on a tool for a new one instead of sharpening? Come to this workshop and learn how to extend the life of your tools, and their blades. We'll cover both maintenance and sharpening using low tech methods for your hand-saws, pruners, loppers, shovels (no moving parts, but still work better when they are maintained!), chainsaws and brush-blades. To register for this workshop visit www.StewardshipNetwork.org/HuronArbor or call 734-996-3190.

The Science, Practice and Art of Restoring Ecosystems Conference

Friday and Saturday, January 20-21

Presented by the Stewardship Network at the Kellogg Hotel and Conference Center, East Lansing

Two great days of informative talks and workshops focusing on Stewardship and Ecosystem Services with a special track on fire offered in partnership with the Lake States Fire Science Consortium. To register call the Stewardship Network at 734.996.3190.

Legacy Land Partner Gathering - Stewarding Your Land, Techniques Including Prescribed Fire

Saturday, February 4th, 10am-12pm

NEW Center- 1100 North Main St., Ann Arbor

Legacy invites all land and conservation agreement donors to a potluck/pancake breakfast. Another opportunity for great food and conversation! Save the date and call in with stewardship topics you want to know more about! 734.302.5263

Stewardship Workday - Beckwith Preserve

Saturday, February 25th, 1-4pm

E. Main St. on north side, just west of the Maple intersection, Stockbridge

It's early in the year for a workday, but a fun project!! We are working with REI to protect the stream bank in the Beckwith Preserve and need your help to place erosion blanketing along the banks and install live native shrub stakes. Dress warmly and we'll make sure you have enough snacks. Please let us know if you can make it by contacting Dana at dana@legacylandconservancy.org.

Please call to register for all of our events at 734.302.5263. Workday participants should wear long pants, full shoes, and bring a full water bottle. More information can be found about these events on our website: www.legacylandconservancy.org

Across the Board



By Robert Tetens
Past President

This has been a benchmark year for Legacy Land Conservancy. As hard as it is to believe, we celebrated our 40th anniversary in June. While it's impressive to consider that over 4,500 acres of forests, farms, prairies and wetlands have been protected over those years, it's equally impressive to realize just how many people have contributed their time, resources and effort to help this organization be successful and meaningful.

In the past few years we have established productive working relationships with other environmentally oriented organizations in our region. The most significant partnership of the past year, with long term implications for land preservation efforts in Washtenaw County, is with the Washtenaw County Natural Areas Preservation Program (NAPP).

NAPP was established by the Washtenaw County Board of Commissioners (BoC) a little over ten years ago. The intent of this tax-supported program is to acquire, protect, manage and allow appropriate public access to nature preserves throughout the County. The program has received national acclaim, and in its first ten years has protected over 2,000 acres of land.

Prior to renewing the program for another ten years, the BoC amended the NAPP ordinance (Ordinance 128) to recognize and support the use of conservation easements to protect farmland. Experience had shown that most parcels nominated to NAPP included some acreage that was still actively farmed. Securing a conservation easement on that farmland provides the desired protection, while leaving the land in private ownership and on the tax rolls.

As approved by the voters in November of 2010, 75% of the available funds would now be used to acquire natural areas; and 25% would be set aside for conservation easements on farmland. A parallel review and prioritization process, in this case conducted by the County's Agricultural Lands Preservation Advisory Committee (ALPAC), has been created to advise the Washtenaw County Parks and Recreation Commission (WCPARC) - who manage the program -- on potential conservation investments.

Recognizing their expertise, WCPARC has contracted with Legacy to manage the work of ALPAC leading to that recommendation(s). This partnership provides a reliable long-term source of revenue for Legacy, efficiency for the county program, and will undoubtedly result in much more land being protected.

Thanks again to everyone who helped us get this far. I'm already looking forward to our 50 year report card.

40th Anniversary Year in Review

It somehow feels right to say that Legacy Land Conservancy has enjoyed 40 years of natural, organic growth since its founding in 1971. In our 40-year history, we have protected over 4,750 acres of pristine land and productive farms. To celebrate our achievements, we sponsored three events: "Five Hikes in Five Days", the "Bus Tour", and the "Back to the Country Gala". We have one more upcoming event called "STAND In The Place Where You Live." All events are sponsored by Toyota.



Five Hikes in Five Days

Starting on October 5, and ending on October 9, we set out on one hike a day to different preserves protected by Legacy including, Sharon Hills, Beckwith, Johnson, Woodland, and Creekshead Preserves. Participants were able to learn about the layouts of the preserve, wildlife, and invasive species in the area while enjoying the beautiful Michigan fall weather.



Bus Tour

On August 20, a bus full of wonderful people ventured out to our magnificent protected lands and had a chance to learn more about local efforts to protect the nature, waterways & farmland that make our community a great place to live, work, and play. We met at REI, drove by many of Legacy's projects and spent the afternoon out at the Discovery Center and Sharon Hills.



Back to the Country Gala

On June 9, the diverse land protection community came together to celebrate 40 years of land protection at the beautiful Misty Farm. The table was set with local food, beer and wine from Zingerman's Roadhouse, Grange Kitchen & Bar, Sandhill Crane Vineyards and many more, while the stage was set with homegrown entertainment featuring the Chenille Sisters. Special thanks to our guests, sponsors and especially our lead sponsors, Toyota, the Americana Foundation and the Sarns Family for making our evening so extraordinary.

TOYOTA

STAND In The Place Where You Live



Janet Kohler on the Marigold Marsh Tree Farm owned by Betty Jean Murray.



Nancy McKay's painting of a May Apple flower.

In celebration of Legacy Land Conservancy's 40th anniversary, we have partnered with the Chelsea Center for the Arts (CCA) for what we think of as our most artistic conservation effort ever.

In this inspired partnership, Legacy and CCA have selected a group of 16 artists to create individual works of art that celebrate land protected by Legacy. Each artist was assigned a particular site. These very special protected lands are not open to the public, but all are areas within 30 miles of Ann Arbor. Through their works, these artists bring insight into our relationship with the landscape and how we inhabit and change the natural environments in which we live. "Art helps us understand the idea of place and illuminates how our sense of place is connected to our ideals and identity," said Cathy Barry, Chelsea Center for the Arts trustee.

Co-curators of the exhibition are artist Cathy Barry and longtime local conservation champion Barry Lonik. The artists include: Barbara Bushey, Deborah

Campbell, Nancy Feldkamp, Steve Gilzow, Birgit Hutteman-Holz, Angelis Jackowski, Janet Kohler, John Lloyd, Nancy McKay, Brenda Miller, Susan Moran, Lynn Quick, Anne Rubin, Cathy VanVoorhis, Nora Venturelli, and Elaine Wilson. Media includes: paint, photography, textiles and sculpture.

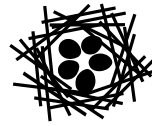
On **Friday, December 2, 2011, from 6 p.m. to 8 p.m.**, Reinhart Realtors will sponsor a reception at the CCA Gallery. "Legacy Land Conservancy and the Chelsea Center for the Arts are both tremendous community resources," says Dave Lutton, President of the Charles Reinhart Company. "We are very proud to support these wonderful organizations as well as the STAND Project." Sandhill Crane Vineyard wines will be served with light appetizers. The reception is free and open to the public.



Financial Report

Statements of Financial Position - Audited

June 30, 2011 and 2010



LEGACY
Land Conservancy

ASSETS

	2011	2010
Current Assets:		
Cash and cash equivalents	\$615,700	\$375,601
Investments	620,471	548,487
Pledges receivable	500	900
Grants receivable	1,045	510
Accrued interest receivable	2,235	3,718
Prepaid and deferred expenses	8,496	2,623
	1,248,447	931,839

Fixed assets, net of accumulated depreciation 1,235

Other Assets

Preserves- Encumbered	\$1,295,150	\$1,295,150
Preserves- Unencumbered	\$2,379,853	2,379,853
Lands (held for sale for operations)	150,000	150,000
Easements	61	57
	3,825,064	3,825,060

Total Assets **5,074,746** **4,756,899**

LIABILITIES

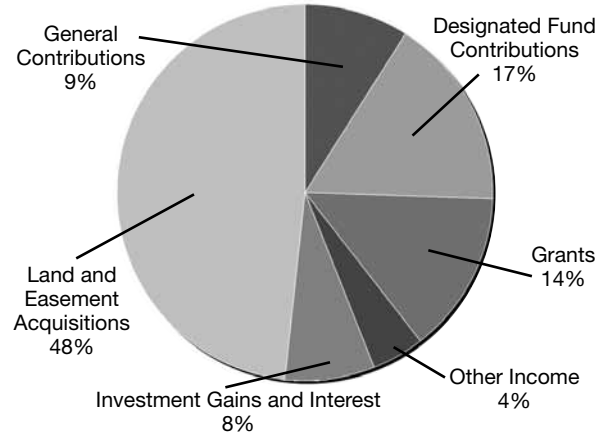
Accounts payable	\$10,554	\$1,355
Accrued expenses	16,657	13,659
	27,211	15,014

NET ASSETS

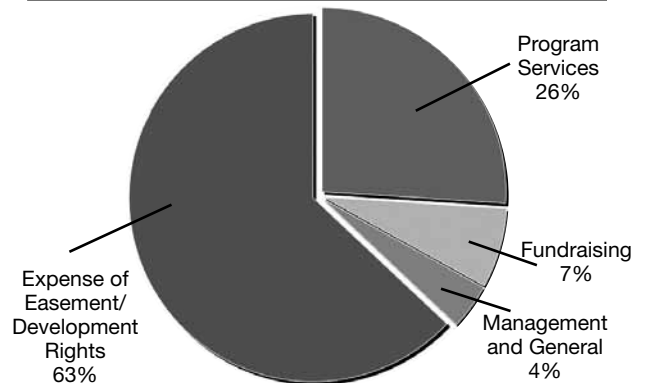
Unrestricted	2,837,631	2,817,151
Temporarily restricted	266,076	85,448
Permanently restricted	1,943,828	1,839,286
	5,047,535	4,741,885

TOTAL LIABILITIES AND NET ASSETS **\$5,074,746** **\$4,756,899**

REVENUE



EXPENSES



Statements of Activities - Audited

	2011				2010
	Unrestricted	Temporarily Restricted	Permanently Restricted	Total	Total
Revenue:					
Contributions	\$124,039	\$201,187	\$10,000	\$335,226	341,120
Grants & Contracts	142,047	37,600		179,647	137,554
Events and Miscellaneous Income	52,646			52,646	5,647
Interest and dividends	3,789		9,001	12,790	5,255
Realized and unrealized investment gains (losses), net of fees			85,007	85,007	10,961
Acquisition of easements/development rights	612,000			612,000	1,417,000
Acquisition of donated land (held for sale for operations)					150,000
Net asset reclassification	57,625	(58,159)	534	-	
	992,146	180,628	104,542	1,277,316	2,067,537
Expenses:					
Program services	252,700			252,700	195,891
Fundraising	68,130			68,130	32,981
Management & General	38,840			38,840	40,697
Expense of easement/development rights	611,996			611,996	1,416,992
	971,666	-	-	971,666	1,686,561
Net Increase (decrease) in net assets [Revenue less expenses]	20,480	180,628	104,542	305,650	380,976
Net Assets, beginning of year	2,817,151	85,448	1,839,286	4,741,885	4,360,909
Net Assets, end of year	2,837,631	266,076	1,943,828	5,047,535	4,741,885

Protecting Nature, Food & Water, Here Where You Live

Serving Southern Michigan by protecting its forests, prairies, farms, wetlands and waters - today and forever.



Bigelow Conservation Agreement, 37 acres

This scenic conservation agreement protects land along the Falling Water Trail in Jackson County. Legacy partnered with the Dahlem Conservancy to complete the agreement.



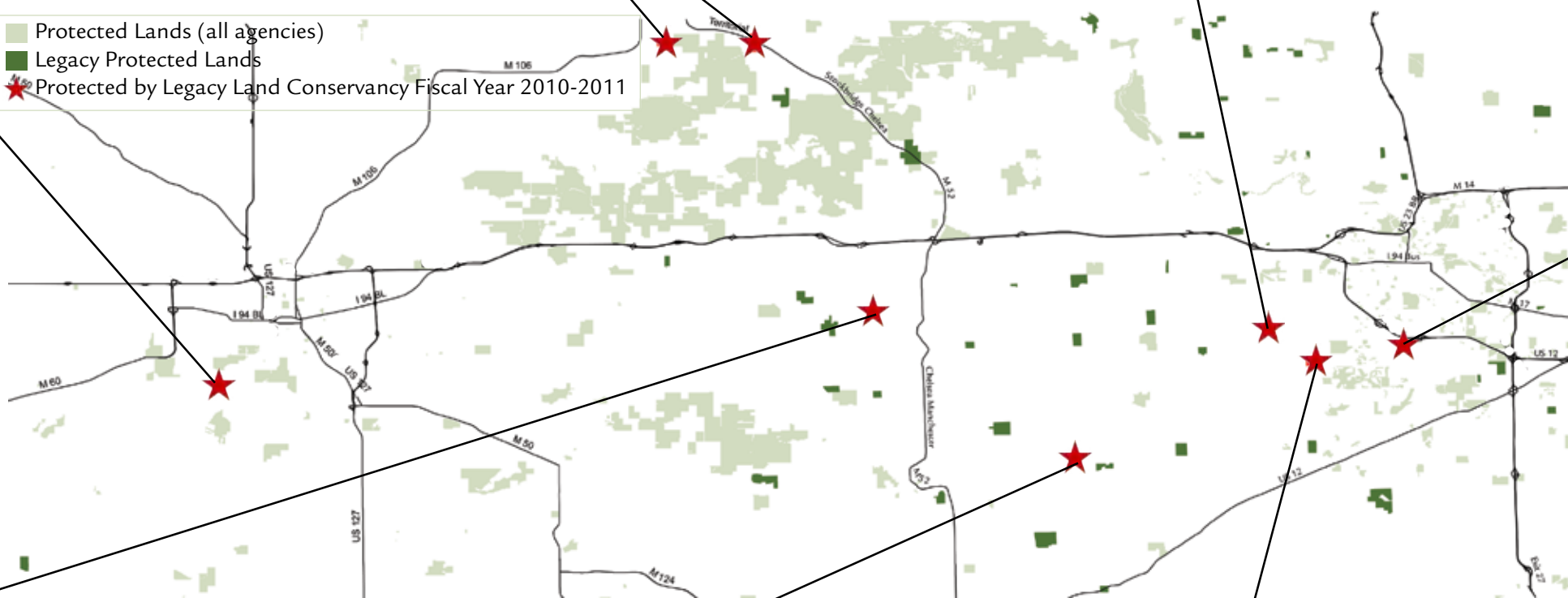
Spike Clark Trust Preserve, 102 acres
Legacy facilitated getting these ecologically important acres into conservation with Washtenaw County Parks and Recreation.

Waterloo Parcels, 155 acres

Legacy regularly joins with other organizations to help protect the most land we can! These additional parcels of protected land increase public access to Southeast Michigan's "Wild Places."



Protected Lands (all agencies)
Legacy Protected Lands
Protected by Legacy Land Conservancy Fiscal Year 2010-2011



Stephenson Conservation Agreement, 12 acres

These wooded acres were the site of a wood-fired kiln for the Stephenson artists for many years. Seen here is a key triangulation point marker on the property placed by the government for surveying the earth used in geodetic and land surveying.



McMullen Conservation Agreement, 5 acres

The McMullens have made this small woodland special to their family inviting each child and grandchild to have their own tree to take care of and watch grow to maturity as the children grow. They now have offered this land to school groups interested in getting out into nature so more children can enjoy its benefits.

Rees Conservation Agreement, 10 acres

These peaceful acres on Columbia Lake provided the Rees' many years of refuge which will now be available for future generations.



Girbach Conservation Agreement, 100 acres

This centennial farm will remain in production for a new generation of farmers providing locally raised livestock for the local market. The development rights were acquired by a coalition of the Ann Arbor Greenbelt, Lodi Township, Legacy Land Conservancy, and generous cooperation from the Girbach family and their Realtor.



Scio Township Conservation Agreement, 45 acres

This conservation agreement is part of a larger farm of over 400 acres. This additional agreement brings the total up to 216 acres preserved.



Thank You!

Legacy Land Conservancy expresses our sincere appreciation to our generous supporters. Thank you for helping us protect Southern Michigan's forests, prairies, farms and waters today and forever.

Founders (\$10,000 and up)

Anonymous
Anonymous
Sally & Ian Bund
Bill & Carol Kauffman
Thomas B.
& Debby McMullen
Helen & Mike Vlasic Family

Partners (\$5,000 - \$9,999)

Anonymous
Gavin Clabaugh
& Margaret Engle
Marguerite Smith

Benefactors (\$2,500 - \$4,999)

Paul & Anne Glendon
Frances & Campbell Laird
Barbara Michniewicz
& Gerald Nordblom
Roger & Coco Newton

Conservators (\$1,000 - \$2,499)

Anderson Family Fund
Tom & Rosanne Bloomer
Michael Boehnke
& Betsy Foxman
Suzanne L. DeVine
& John Koselka
Michele Eickholt
& Lee Green
Martin Gold
Bob & Jane Grover
Robert R. & Cynthia Helber
Drs. Kent & Mary Johnson
Susan Lackey
& Steve Daut
Thomas F. & Judith G. Mich
Mrs. Frances Quarton
Richard & Norma Sarns
Stephen Sevok
Scott & Frankie Simonds
Lois A. Theis
Ron Trachet

Sustainers (\$500 - \$9,999)

Kathleen Dul Aznavorian
& Mike Aznavorian

George & Lucia Brewer
Scott & Wendy Broshar
Jean & Phelps Connell
Stephanie & Larry Doll
Robert & Debbie Gilbert
Marjorie Hagene
& David Saksewski
Elen & Ezra Oneal
Penny & John Owen
Adam & Theresa Smith
Bill & Charity Steere
Dr. Sally A.
& Jeffrey P. Stommen
Phillip & Ann Surratt
Arlene Taylor
& Matt Laux
Patricia & Dwayne
Vaillencourt

Champions (\$250 - \$499)

James C. Adams
Rob & Patty Aldrich
John M. Allen
& Edith A. Maynard
Lucie Audette
& Rob Bauman
John Bassett
Ted & Peggy Beals
Steven Bean
Ruth & Alfred Beeton
James Bergman
& Penelope Hommel
Victor Boccalon
Kathie Briegel
Gary & Shelley Bruder
David & Angela Chernin
Gerald Clark
& Shutta Crum
Susan & Patrick Cooley
Martha Coscina
David Dickinson
& Jeannine LaPrad
Andrzej Dlugosz
& Cynthia Knapp Dlugosz
Steve & Judy Dobson
Wendell & Nancy Dunbar
Douglas & Elizabeth Duwe
Abbe Eaton

Sandra Sorini Elser
Robert Ewing
& Beth Morey Ewing
Clark & Marilyn Ewing
Joseph Fazio
Jack & Julie Frost
Jerald & Nancy A. Frost
John Fyfe, Jr.
Chris & Patricia Gearhart
Christine & Philip Green
Bob & Susan Grese
Bill & Martha Grimes
Jacob & Anne Haas
Dr. John Hand
Judith Heady
Julia Henshaw
Maurita Holland
Ann & Tom Hunt
Miriam Hyde
Robert Johnson
Michael Kaericher
Kurt & Barbara Krueger
David Lett
Barry Lonik
Bobby & Andrea Ludwig
David & Louise Lutton
Denise & Robert Lutz
Irwin & Fran Martin
Maureen S. Martin
& Mike Penskar
Dan McAskin
John McCauley
& Virginia Weingate
Mrs. Julie McClellan
Michael & Nancy McKay
Ann Meredith
Michael Moran
& Shartel Brown
Betty Jean
& Brownson Murray
Andrew Muth
& Patricia Saad
Ted Neff
Drs. Ed & Mary Ann
Nirdlinger
Patrick & Penny O'Malley
John & Kimberly O'Rear
Antoinette Pilzner
& Daniel Moons
Elaine & Bertram Pitt
Lana & Henry Pollack
Susan Pollay
& Bruce Watkins
Heather Price
Jeanne Raisler
& Jonathan Cohn
John Rogers
Edwin Sanchez
& Laurel Harmon
Dale Sass
& Idelle Hammond-Sass

Jane Schmiedeke
Clark & Amy Shuler
Brooks & Nancy Sitterley
Ethan Smith
Timothy Sochocki
Toni & Ken Spears
Frank & Evelyn Stukenborg
John Swales
& Violet Benner
Bill & Marlene Thomas
Jack Tobias
Ruth Vail
Rocky & Judy Ward
Milton Weidmayer
The Honorable Ronald
& Eileen Weiser
Helen Welford
& Robin Warner
Karen Yamada
& Gary Dolce

Friends (\$100 - \$249)

Karen M. Adams
Deaver Armstrong
Leslie Arwin
Drs. Arthur
& Elizabeth Beaudoin
Jane Bloom
Janis Bobrin
& Mike Allemang
Marcia Boynton
& Karl Wizinsky
Cindy Browne
Melissa Combs
William & Joyce Connett
Hubert English
& Lineve McKie
Reno & Nancy Feldkamp
Kelly & Ed Frutig
Carol Furtado
Cheryl Gibbs
Thomas & Ann Gladwin
Suzanne Goodrich
Norma & Daniel Green
Mark Haddox
Patricia Harris
Steve Hastings
Mary Hathaway
Robert, Jr. & Anne Helber.
Erika Homann
& Michael Wellman
James House
& Wendy Fisher House
Larry Junck
& Robbi Duda
Ms. Sara Kazan
David & Martha Krehbiel
Gary Laderach
Theodore & Wendy Lawrence
John Lloyd
& Sue Budin



Zingerman's Roadhouse team

Mary Louise Lowther
 David & Sarah Lynch
 Hans & Jackie Maier
 Griff & Pat McDonald
 Nelson & Catherine Meade
 Harvey Michaels
 & Gloria Helfand
 Stephen Musko
 & Sarah Hess Musko
 John & Gwen Nystuen
 Faye Ogawawara
 Steve Olsen
 Jennifer Punttenney
 Ellen & Stephen Ramsburgh
 Jim & Cindy Reach
 Susan Reinhart
 John & Linda Remsberg
 David Rogers
 Rita Rotramel
 Theresa & Karl Schenk
 John Schlansker
 Kristen Schleick
 Peter Schriemer
 Stephen Seymour
 David & Elvera Shappirio
 Margie Shelton
 Steven Slack
 & Patricia Joyce
 Joseph & Irene Smith
 Judith Smutek
 Catherine St. Clair
 Jonathan Sugar
 & Nancy Barbas
 Sylvia & Thomas Taylor
 Robert Tetens
 Kathleen Timberlake
 Ben & Bonnie Upton
 Eric & Franziska
 Van der Schalie
 Annette Van der Schalie

Members

Daphne Adams
 Terry Adams
 & Barbara Lamar
 Robert & Judith Ahronheim
 Robert & Katherine Aldrich
 Henry Aldridge
 & Laura Whalley
 Michael & Suzan Alexander
 John Allison
 & Julia Miller
 Peter Amann
 & Jean Apperson
 Rolf & Harriet Amsler
 Mukesh & Sarah Anand
 Donald Anderson
 Cynthia Avery
 Mia Axon
 Shirley & Donald Axon
 Richard & Susan Bahnsen
 Brenda Baker
 Ruth Barnard
 David Beck
 & Angela Johnson
 Roderick & Julia Beer

Nancy Bennet
 Paul Bidwell
 Bruce Bigelow
 Margaret Bignall
 & Paul Hossler
 Elizabeth Bishop
 Jane Bishop
 William & Susan Black
 Jane Blumenthal
 Tom Bosserd
 Stephanie Bracciano
 Anthony Brakora
 & Judy Sharkey
 Kelven & Howard Braun
 James & Sandra Breck
 W. Scott Brown
 William & Mary Browning
 Nancy Brucken
 Jim & Marie Brucker
 Carol Buatti
 Laurence & Sheryl Burgess
 Stephen & Deborah Burling
 Eunice Burns
 Walt & Nancy Byers
 Pam Byrnes
 & Kent Brown
 John & Mary Caldwell
 Marshall & Janice Carr
 Kenneth & Gail Castle
 Sue & Richard Chase
 Beverly Chethik
 Edward & Rebecca Chudacoff
 Nancy Clay
 Don Clewell
 Carl Cohen
 & Ruth Moscow-Cohen
 Robert Cohen
 Carol Collins
 Louis Colombo
 David & Margaret Conlon
 Susan Contratto
 & Thomas Weisskopf
 Dennis Cooperson
 Wendy & Richard Correll
 Edward & Marilyn Couture
 Diane Coxford
 Carol Cramer
 & Thomas Longworth
 Richard & Penelope Crawford
 James E. Crowfoot
 & Ruth Carey
 Rane Curl
 George & Elizabeth Daubner
 Emily Catherine Day
 & Jeanette Carlson
 John Deikis
 & Carol Blotter
 Donald & Pamela Devine
 James & Suzanne Di Milia
 Richard Dice
 Brenda Donaldson
 Wallace & Marlene Donoghue
 Richard & Deanna Dorner
 Dallas Dort
 Karin & Harry Douthit
 James & Lois Dowling



40th Anniversary Committee members - L-R- Alisande Read, Lucia Brewer, Ann Lamkin-Ferranti & Margaret Connors

Jim & Cathie Dries
 Mel & Elizabeth Drumm
 Arun & Jennifer D'Souza
 Catherine Duchon
 Rita & Mort Dunlop
 Peter & Grace Duren
 Stephen & Janine Easter
 Mr. & Mrs. S.J. Elden
 James Emerick
 & Doreen Murasky
 Cary & Suzy Engleberg
 David & Jill Esau
 Faith Esch
 Hal & Donna Estray
 Don & Gwen Evich
 Ann & Mike Feeney
 Thomas Fegan
 Sheila Feld
 Eleanor Feller-Sussman
 Carolyn Ferrell
 & Lorin Burgess
 Michael Ferszt
 Bill & Sara Fink
 Dennis Finseth
 Wayne Fisher
 Michael Fitzsimmons
 & Hope Haefner
 Carol & Robert Fletcher
 Guillermo Flores
 Barbara Fonville
 Betsy Foote
 & Tom Gebhardt
 Michael Lee Fouts
 Richard Fowler
 Howard & Margaret Fox
 Marija Ruta Freeland
 Jason Frenzel
 Martin Friedburg
 & Elizabeth Dugdale
 Bernard Friedman
 Paul J. Gambka
 Ron Gamble
 John & Susan Gannon
 Gerald T. Gardner
 Walter Gauthier
 & Catherine Ward
 Michael Gerdenich
 & Ina Hanel-Gerdenich
 Bruce & Sara Gibb
 Beverly Jeanne Giltrow
 Louis Glazer

Laurie Goetz
 Robert Goodsell
 Jim Govert
 & Rachel Nosowsky
 Cecilia Govrik
 Beth Louise Green Peace
 Richard A. Green
 Brian Greminger
 Raymond & Daphne Grew
 Talbot & Jan Hack
 D. James Hadley
 Alli Hall
 Georgette & Kieth Hansen
 Rachel Brett Harley
 James F. Harlin
 Rich Harlow
 Joan Harris
 & Ed Sarath
 Linda Hartmann
 Donald & Clara Hasenick
 William Hassel
 & Barbara Boughen
 Carolyn Hastings
 Ms. Robin Haugen
 Elizabeth Hay
 Kenneth & Judy Hein
 Suzie Brucker Heiney
 & Robert Heiney
 Dorothy Ewald Hejna
 Sivana Heller
 Joan Hellmann
 Norman Herbert
 Heidi & Stephen Herrell
 Anne Herrmann
 Ross Hieber
 & Virginia Caraballo Hieber
 Alice Hinterman
 Kay Holsinger
 & Douglas Wood
 Andrew Horning
 & Catherine McGavran
 Rebecca Horvath
 Kenneth & Carol Hovey
 Joel D. Howell
 Dria Howlett
 Patricia Huebner
 Rosemary Hughes
 Wesley & Henrietta Jend
 Emily R. Jenkins
 Kathleen Johnson
 Samuel Johnson

Ted Julvezan
 Harvey Juster
 Amanda Kachur
 & Doug Wathen
 Laura Kaminski
 Rachel & Stephen Kaplan
 Peter & Carol Kappus
 Rich Kato
 Erika & Ralph Keith
 Susan Kellam
 Keith & Leslie Kellman
 Sally & David Kennedy
 Richard & Marie Kent
 Barbara Kessler
 & Richard Soble
 Cary & George Ketzner
 Edith Chana Kieffer
 Wilfred Kincaid
 Gloria King
 Drs. Dana & Paul Kissner
 Bruce & Mary Klosner
 J. David Kluck
 William L. & Betty G. Knapp
 John & Anne Knott
 Melissa Knudson
 Ronald & Rosalie Koenig
 Julia Kothes
 Martha Krieg
 Faith & Ralph Krug
 Scott Kunst
 Susan Lamb
 Nancy Lambert
 Leslie & Dennis Lampron
 Peter & Fawn Landrum
 Carol Landsberg
 Serena & Greg Larson
 Marian Laughlin
 John & Linda Leatham
 Gerald & Janet Leckrone
 David & Barbara LeRoy
 Dale Lesser
 Charles Letts
 Sheldon & Mary Levy
 John Lilley
 Jason Lindauer
 Cheryl & John Lipan
 Nancy B. Livermore
 Sandra Lopez
 Dr. James T. Low
 & Louise Anderson Low
 Jeffrey Mace
 Carol & Philip MacFarland
 Donald MacGregor
 Ian MacGregor
 & Vickie Wellman
 Duncan N. Magoon
 Mary Mahony
 & Paul Smith
 Daniel & Kay Maloney
 Claire & Richard Malvin
 Bruce & Jodi Manny
 Loretta Maple
 Danny & Joanne Massengale
 David & Marjorie Mastie
 George & Beth McCalla
 Richard & Ann Mary



*Chef Brandon Johns & Legacy
 Trustee, Margaret Engle.*

McCarthy
 Matthew & Jessica Mccumons
 James McIntosh
 & Elaine Gazda
 John & Sheri McLelland
 Marshall McLennan
 Santosh & Anita Mehra
 Richard & Miriam Meisler
 Carol Mohr
 Andrew Morrill
 & Marie Knoerl
 Mary Motherwell
 Neil Mueller
 Mike & Cathy Muha
 David Myer
 Nardi & Margaret Nance
 David & Jeanne Neuhoff
 Daniel S. Newman
 & Lisa Levit Newman
 Michael & Glenina Nolte
 Larry & Sarah Nooden
 Janet & Ross Nord
 Elizabeth Noren
 Howard Norwood
 Arthur Nusbaum
 G. Elizabeth Ong
 Linda Palmer
 Mark Pappas
 & Marilyn Saker
 Walter Parry
 James & Nancy Paul
 Jeanne Paul
 & Tom Nicely
 Susanne Peckham
 Mary & John Pedley
 Margaret Phillips
 Louise Piranian
 Philip & Kathleen Power
 Michaline Prais
 Diana & William Pratt
 Leslie & Douglas Quint
 Diana Raimi
 & John Dryden
 Timothy & Patricia Redmond
 David B. Rein
 Frederick Remley
 & Anne Gardner Remley
 Margaret J. Ressler
 Douglas & Kathleen Rhine

Terry Richards
 Clark Richardson
 Herbert & Donna Rickert
 James B. & Melissa Anne
 Rogers
 James Roles
 Dietrich & Mary Ann Roloff
 Lee Rome
 & Sherry Hansen
 Allan & Lola Rubens
 Mack Ruffin IV
 & Kathy Carter
 June A. Rusten
 Jeffrey Sabatini
 Peter & Anita Sandretto, Jr.
 Robert & Kathleen Savit
 Ms. Etta G. Saxe
 Nancy Schermerhorn
 Pete Schermerhorn
 & Suzie Zick
 Dr. Joan McGowan Schmerl
 Rudolf Schmerl
 Jean Scholl
 Paul & Mildred Scholl
 Jeanie & Robert Schultz
 John Schumacher
 Richard & Janet Schwarze
 Miriam Segall
 & Stephen Barrett Segall
 Michael & Joanna Semanske
 David Share
 & Kate Jones Share
 Clifford G. & Ingrid B. Sheldon
 Nancy Shiffler
 Lori Shulskie
 James Shurlow
 Bill & Sheila Sikkenga
 Robert Silbergleit
 & Catherine Zudak
 Edwin & Shirley Smith
 Haldon & Tina Smith
 Peter Smith
 & Martha Weintraub
 Ronald & Julie Smith
 Jonas Snyder
 Mary Stadel
 Gayle Steele
 Gari Stein
 & Ira Iax
 Gary Stelzer
 & Nancy Frushour
 John & Susanne Stephenson
 Cynthia Stewart
 & Don Haefner
 Paul & Eulalia Stewart
 Lawrence & Patricia Strauch
 Eugene Su
 & Christin Carter-Su
 Michael & Cynthia Sutinen
 Becky Swank
 F. Brian & Lee Talbot
 Alice Sano Teachout
 Ellen Teller
 Bruce Thelen
 & Kathryn Flood
 Linden & Stephen Thoburn

Steve & Carol Trinkle
 Scott Trowbridge
 & Jean Holther
 Barbara Underwood
 & David Patria
 Deanna & James Utsler
 Carl & Suzanne Van Appledorn
 Marcia Van Fossen
 & Woody London
 Frederik & Carole
 Van Reesema
 Virginia Vanden Broek
 Marie Hunter VanSchoten
 Bill Vargo
 Denice Virgo
 Scott & Ruth Wade
 Thomas & Mary Wakefield
 Susan Waldschmidt
 Martin Walsh
 & Margaret Orlik-Walsh
 Arthur & Renata Wasserman
 Patrick & Susan Waters
 Ann & Warren Watkins
 Mary Watkins
 Doug & Sue Weber
 Joan & Will Weber
 Marlene & Alan Weintraub
 James & Kathleen Welch
 Bill & Marlene Wenk
 Elsie West
 Cherry & Kenneth Westerman
 Ronald & Janice Weston
 Rae Ann Weymouth
 Carol Widmayer-Flint
 Jason Wiederhold
 & Angela Carter
 Parke Wiegman
 Suzy Wienckowski
 Elizabeth Williams
 Mark & Linda Williams
 Paul Winder
 Jean Wineman & Terry Sargent
 John & Alice Wissinger
 David Wiss
 & Margi Brawer
 Dana Wright
 K. Wurster
 Ed & Corazon Yee
 Patrick & Julie Young
 John & Cynthia Young
 Lenore Zelenock

Foundations, Government and Organizations

Americana Foundation
 Chelsea Community
 Foundation
 Consumers Energy
 Foundation
 Frank W. & Roberta Jane
 Lynch Foundation
 Heart of the Lakes
 Huron River Watershed
 Council
 Michigan Department of
 Natural Resources

The Mosaic Foundation
Waterloo Hunt Club

Corporate Partners

Absolute Title
American Title Co. of Jackson
Ann Arbor Convention
& Visitors Bureau
Ann Arbor Financial
Bank of Ann Arbor
Chelsea State Bank
DeLoof, Hopper, Dever
& Wright, PLLC
Dickinson Wright, PLLC
Greenstone Farm Credit
Services
Malloy Lithographing
Markowski & Company
Merrill Lynch
Miller, Canfield, Paddock,
& Stone, PLC
Pollock Investment Advisors,
LLC.
Sandhill Crane Vineyards
SI Company, LLC
The Mannik & Smith Group
Toyota Motor Eng. & Man.,
N.A. Inc.
United Bank & Trust
Erika Taylor

In-Kind Donations

Mary D. Alessandro Baskets
Ann Arbor Symphony
Orchestra
Antiques on the Mall
Arbor Springs Water
Backyard Gourmet
Rosanne & Tom Bloomer
Café Japon
Crystal Mountain Retreat
Peter DeLoof
Delux Rental
Deva Designs, Suzie Heiney
Suzanne DeVine
Downtown Home & Garden
Everyday Wines
Edible WOW
Fast Signs
Nancy Feldkamp
Stephanie Gallison
Paul & Anne Glendon
Golden Limo
Graham Graphics LLC
Grange Kitchen and Bar
Bob & Cindy Helber
Helen Bunch Creations
Jolly Pumpkin
Janet Kohler
Barry Lonik
Luminosity Salon & Spa -Tara
Mainstreet Ventures
Dr. Sheldon Markel
Margo Mehringer
MAV Development
Mercy's
Misty Farm

Motawi Tile
Old House Gardens
Plum Market
PNC Bank
Quest Productions- Jim Adams
Radius Garden Tools
Alisande Read
REI
Roos Roast
Russell Video
Sandhill Crane Vineyards
Schakolad Chocolate Factory
Dennis Serras
Star's Café
Bill Steere
Susanne Stephenson
Rick Taylor
The Ark
The Songbird Company
U of M Musical Society
Washtenaw Dairy
Weaver Tiles
Whole Foods Market
Wolverine Brewery
Zingerman Creamery
Zingermans Roadhouse

In memory of

Elmer Diuble
Tom & Rosanne Bloomer
Harlie Smith
Martha Coscina
Miriam Hyde
Miriam Hyde
Melissa Knudson
Marguerite Smith
Ethan Smith
John and Cynthia Young



In honor of

Emily R. Jenkins
for the birth of twins
Carolyn & Eleanor
Jim & Marie Brucker,
in honor of Suzie Heiney
Jason Lindauer, Merrill Lynch,
in celebration of Kathleen
Kelly's birthday
Suzie Brucker Heiney
& Robert Heiney,
in honor of Charity Steere
Theresa & Karl Schenk,
in honor of Jim Govert
and Suzie Heiney



Volunteer Appreciation Picnic - L-R- Ed Frutig, Kelly Frutig, Trilby Becker, John Owen, Penny Owen, Patty Branam, Jud Branam.

Gift Memberships

K. Wurster, in honor of
Suzanne Goodrich

Farmland Fund

Lucie Audette & Rob Bauman
Drs. Arthur & Elizabeth
Beaudoin
Tom & Rosanne Bloomer
Stephanie Bracciano
Sally & Ian Bund
John & Mary Caldwell
Gavin Clabaugh
& Margaret Engle
Jean & Phelps Connell
Andrzej Dlugosz
& Cynthia Knapp Dlugosz
Stephanie & Larry Doll
Robert Ewing
& Beth Morey Ewing
Clark & Marilyn Ewing
Thomas Fegan
Reno & Nancy Feldkamp
Paul & Anne Glendon
Alli Hall
Judith Heady
Julia Henshaw
Susan Lackey & Steve Daut
David Lett
Mary Louise Lowther
David & Louise Lutton
Irwin & Fran Martin
Thomas F. & Judith G. Mich
Barbara Michniewicz
& Gerald Nordblom
Arthur Nusbaum
Elen & Ezra Oneal
Heather Price
Frederick Remley
& Anne Gardner Remley
Dale Sass
& Idelle Hammond-Sass
Kristen Schleick
Adam & Theresa Smith
Marguerite Smith
Joseph & Irene Smith
Catherine St. Clair

Bill & Charity Steere
Becky Swank
Sylvia & Thomas Taylor
Kathleen Timberlake
Ben & Bonnie Upton

Waterloo Fund

Leslie Arwin
David Beck & Angela Johnson
W. Scott Brown
Michael & Lee Fouts
Frank W. Lynch & Roberta
Jane Lynch Foundation
Chris & Patricia Gearhart
Joe & Jude Jarecki
Marian Laughlin
Danny & Joanne Massengale
Daniel S. Newman
& Lisa Levit Newman
John Schlansker
Bill & Charity Steere
Becky Swank
Waterloo Hunt Club

Creekshead Preserve Fund

Michael Kaericher
Marcia Van Fossen
& Woody London

Beckwith Preserve Fund

Frances and Campbell Laird

Forever Fund &

Endowment Fund

Superior Charter Township
Michele Eickholt & Lee Green
Frances & Campbell Laird
Bobby & Andrea Ludwig

Webster Township Fund

Bill & Carol Kauffman

Dorothy and Karl Schnearle Fund (Ann Arbor Community Foundation)

Karl and Gloria Frankena
Kim Bayer

*Please visit us at www.legacylandconservancy.org to see our
volunteer supporters.*

*For corrections, please notify us at
info@legacylandconservancy.org (734.302.5263)*



LEGACY
Land Conservancy
*Protecting and Preserving
Southern Michigan Since 1971*



1100 N. Main Street, Suite #203
Ann Arbor, Michigan 48104
734.302.5263
www.legacylandconservancy.com

NONPROFIT ORG
U.S. POSTAGE
PAID
ANN ARBOR, MI
PERMIT No. 62



Will Power

Could there be a more lasting way to make a difference than a legacy of permanently protected farmland, fields, streams, prairies and waters? By including Legacy Land Conservancy in your will or estate plan, you are helping to leave a legacy for future generations.

If you would like more information on making a bequest, please contact your attorney. Please give us a call and let us know if you are planning on including us in your estate plan or intend to do so. Susan Cooley, 734. 302.5263 or susancooley@legacylandconservancy.org