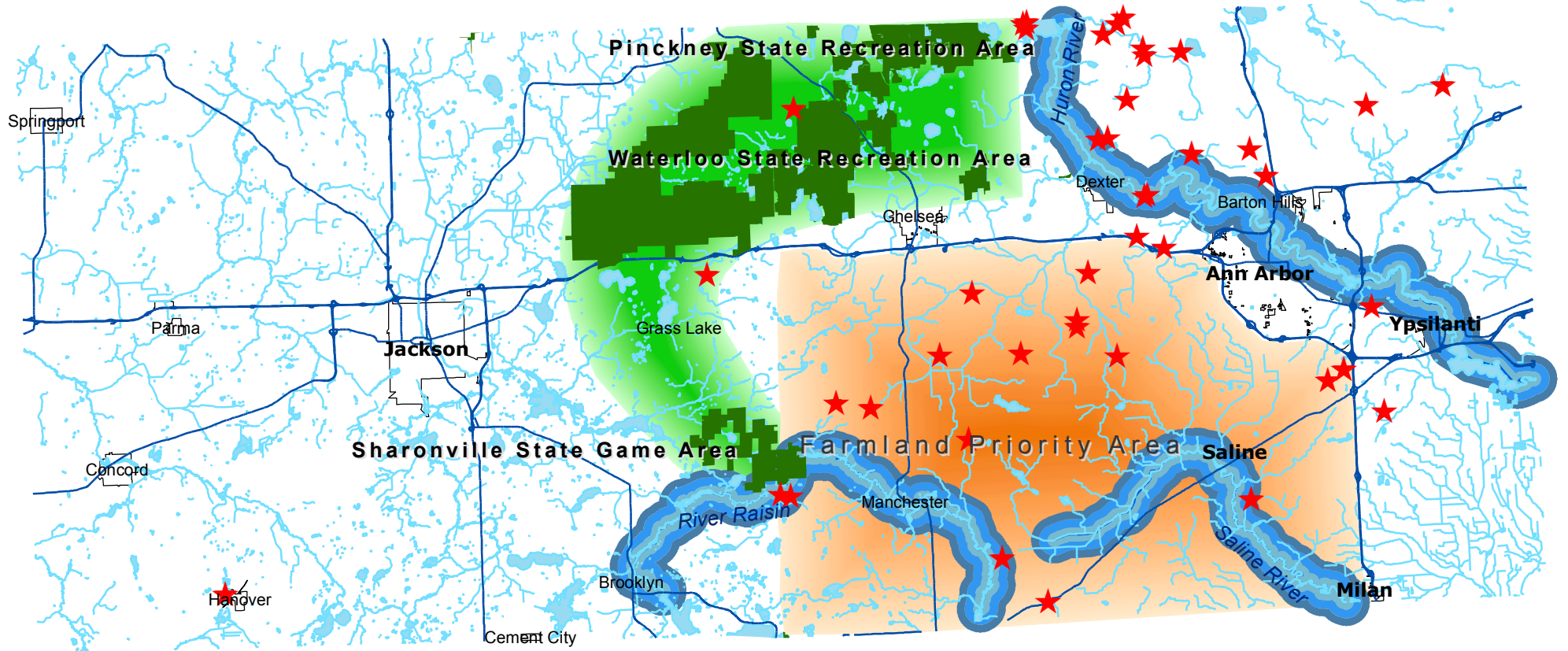






# LEGACY LAND CONSERVANCY LAND PROTECTION PRIORITIES



**LEGACY**  
Land Conservancy

*Protecting and Preserving  
Southern Michigan*

1100 N. Main St., Suite 203  
Ann Arbor, MI 48104  
Phone 734-302-5263/Fax 734-302-1804  
[www.washtenawlandtrust.org](http://www.washtenawlandtrust.org)

-  Property Protected by Legacy Land Conservancy
-  Priority 1: Pinckney/Waterloo/Sharonville natural areas
-  Priority 2: Farmland
-  Priority 3: River Corridors

